



AVENDRA

FF&E SERVICES

AVENDRA FF&E SERVICES

KITCHEN EQUIPMENT BUDGET GUIDE

Table of Contents

| Category | Page |
|--|------|
| ADJUSTABLE HEIGHT TABLE | 1 |
| BACK BAR CABINET, REFRIGERATED | 1 |
| BATCH FREEZER | 1 |
| BLAST CHILLER, ROLL-IN | 2 |
| BLAST CHILLER, UNDERCOUNTER | 2 |
| BLENDER, BAR | 2 |
| BOOSTER HEATER, ELECTRIC | 2 |
| BROILER, DECK-TYPE, GAS | 2 |
| BUFFET DISPLAY SERVER SET | 3 |
| BUFFET WARMER | 3 |
| BUN / SHEET PAN RACK | 3 |
| CABINET, COOK / HOLD / OVEN | 3 |
| CABINET, ENCLOSED, BUN / FOOD PAN | 4 |
| CAN RACK | 4 |
| CARVING STATION / SHELF | 5 |
| CHANNEL PAN RACK | 5 |
| CHARBROILER, CHARCOAL, OUTDOOR GRILL | 5 |
| CHARBROILER, ELECTRIC, COUNTERTOP | 5 |
| CHARBROILER, GAS, FLOOR MODEL | 5 |
| CHARBROILER, GAS, OUTDOOR GRILL | 6 |
| CHEESEMELTER, ELECTRIC | 6 |
| COFFEE BREWER | 6 |
| COFFEE GRINDER | 7 |
| COLD FOOD WELL UNIT, DROP-IN, REFRIGERATED | 7 |
| COMBI OVEN, ELECTRIC | 7 |
| COMBI OVEN, GAS | 8 |
| COMMERCIAL FOOD BLENDER | 9 |
| COMPACT REFRIGERATOR | 9 |
| CONVECTION OVEN, ELECTRIC | 9 |
| CONVECTION OVEN, GAS | 10 |
| CONVECTION STEAMER, COUNTERTOP | 10 |
| CONVECTION STEAMER, ELECTRIC | 11 |
| CONVECTION STEAMER, GAS | 11 |
| CONVEYOR TOASTER | 11 |
| COOK HOLD OVEN CABINET SMOKER, ELECTRIC | 12 |
| COUNTER FREEZER | 12 |
| COUNTER REFRIGERATOR | 12 |
| DISH CART / DOLLY | 12 |
| DISHWASHER, CONVEYOR TYPE | 13 |
| DISHWASHER, DOOR TYPE | 13 |

| | |
|---|----|
| DISHWASHER, DOOR TYPE, VENTLESS | 13 |
| DISHWASHER, UNDERCOUNTER | 13 |
| DISPLAY CASE, DIPPING ICE CREAM | 14 |
| DISPLAY CASE, HOT FOOD, COUNTERTOP | 15 |
| DISPLAY CASE, NON-REFRIGERATED COUNTERTOP | 15 |
| DISPLAY CASE, REFRIGERATED BAKERY | 15 |
| DISPLAY CASE, REFRIGERATED SUSHI | 15 |
| DISPOSER | 16 |
| DISPOSER CONTROL PANEL | 16 |
| DRAFT BEER COOLER | 17 |
| ELECTRIC FLOOR FRYER | 17 |
| ELECTRIC FOOD CUTTER | 18 |
| ELECTRONICS | 18 |
| ENCLOSED MOBILE CABINET EXTRA HEAVY DUTY | 18 |
| EQUIPMENT STAND, FOR COUNTERTOP COOKING | 18 |
| EQUIPMENT STAND, FOR MIXER / SLICER | 19 |
| ESPRESSO CAPPUCCINO MACHINE | 19 |
| FAT VAT | 19 |
| FOLDING TABLE | 19 |
| FOOD PACKAGING MACHINE | 20 |
| FOOD PAN WARMER, COUNTERTOP | 20 |
| FOOD PAN WARMER/COOKER, COUNTERTOP | 20 |
| FOOD PROCESSOR, BENCHTOP / COUNTERTOP | 20 |
| FOOD SLICER, ELECTRIC | 21 |
| FREEZER MERCHANDISER | 21 |
| FROST TOP / COLD SLAB, DROP IN | 22 |
| FROZEN DRINK MACHINE, NON-CARBONATED, BOWL TYPE | 22 |
| FRYER BATTERY, ELECTRIC | 22 |
| FRYER BATTERY, GAS | 22 |
| FRYER FILTER, MOBILE | 22 |
| GUESTROOM REFRIGERATOR | 23 |
| GAS FLOOR FRYER | 23 |
| GLASS POLISHER | 23 |
| GLASS AND PLATE CHILLER | 23 |
| GLASSWASHER, BRUSH TYPE | 23 |
| GLASSWASHER, UNDERCOUNTER / UNDERBAR | 24 |
| GRIDDLE, ELECTRIC, COUNTERTOP | 24 |
| GRIDDLE, GAS, COUNTERTOP | 24 |
| GUESTROOM REFRIGERATOR | 25 |
| HD RANGE, 36", 4 OPEN BURNERS | 25 |
| HD RANGE, 36", 6 OPEN BURNERS | 25 |
| HD RANGE, 36", THERMOSTATIC GRIDDLE | 25 |

| | |
|---|----|
| HAND SINK | 26 |
| HANDWASHING SYSTEM | 26 |
| HEATED BANQUET CART | 26 |
| HEATED DISH CART | 27 |
| HEATED HOLDING PROOFING CABINET, MOBILE | 27 |
| HERB & MICROGREEN GROWING CABINET | 27 |
| HOT / COLD SERVER | 27 |
| HOT DOG BROILER / ROTISSERIE | 28 |
| HOT DOG BUN BOX | 28 |
| HOT DOG GRILL | 28 |
| HOT FOOD WELL | 28 |
| HOT FOOD WELL UNIT, DROP-IN, ELECTRIC | 28 |
| ICE BIN SHUTTLE SYSTEM | 28 |
| ICE BIN FOR ICE MACHINES | 28 |
| ICE DISPENSER | 29 |
| ICE MAKER WITH BIN, CUBE-STYLE | 29 |
| ICE MAKER, CUBE-STYLE | 30 |
| ICED TEA BREWER | 31 |
| IMMERSION BLENDER | 31 |
| IMMERSION HAND MIXER | 31 |
| INDUCTION RANGE, COUNTERTOP | 31 |
| KETTLE, ELECTRIC, COUNTERTOP | 32 |
| KETTLE, ELECTRIC, STATIONARY | 32 |
| KETTLE, GAS, STATIONARY | 33 |
| KETTLE, GAS, TILTING | 33 |
| MICROWAVE | 34 |
| MICROWAVE CONVECTION / IMPINGEMENT OVEN | 34 |
| MICROWAVE OVEN | 34 |
| MILK DISPENSER | 35 |
| MIXER, VERTICAL CUTTER VCM | 35 |
| MOBILE HEATED CABINET | 35 |
| MOBILE PLATE AND DISH DISPENSER | 36 |
| MOBILE REFRIGERATOR CABINET | 36 |
| OPEN DISPLAY MERCHANDISER | 36 |
| OVEN | 36 |
| OVEN, DECK-TYPE, GAS | 36 |
| PLATE RACK | 36 |
| PANINI GRILL | 37 |
| PATIO HEATER | 37 |
| PIZZA BAKE OVEN, DECK-TYPE, GAS | 37 |
| PLANETARY MIXER | 37 |
| POP-UP TOASTER | 38 |

| | |
|---|----|
| POPCORN POPPER | 38 |
| PORTABLE CONTAINER, REFRIGERATED | 39 |
| PROSCUITTO SLICER | 39 |
| QUEEN MARY | 39 |
| REFRIGERATOR | 40 |
| RACK | 40 |
| RANGE, 36", 6 OPEN BURNERS | 40 |
| RANGE, 60", 6 BURNERS, 24" GRIDDLE/BROILER | 40 |
| RANGE, 60", 10 FRENCH HOT PLATES | 40 |
| RANGE, 60", 10 OPEN BURNERS | 40 |
| RAPID COOK OVEN | 40 |
| REACH-IN DUAL TEMP CABINET | 41 |
| REACH-IN FREEZER | 41 |
| REACH-IN REFRIGERATOR | 42 |
| REFRIGERATED MERCHANDISER | 42 |
| REFRIGERATED RAIL | 42 |
| REFRIGERATED SERVICE CASE | 43 |
| REFRIGERATOR | 43 |
| REFRIGERATOR | 43 |
| REFRIGERATOR MICROWAVE COMBO | 43 |
| REFRIGERATOR/FREEZER RACK, ROLL-IN | 43 |
| ROLL-IN FREEZER | 43 |
| ROLL-IN REFRIGERATOR | 44 |
| ROUND GRIDDLE/PLANCHA | 44 |
| SAFE | 44 |
| SAFETY SYSTEM MOVEABLE GAS CONNECTOR | 44 |
| SALAD / VEGETABLE DRYER, ELECTRIC | 45 |
| SALAMANDER BROILER, GAS | 45 |
| SANDWICH / PANINI GRILL | 45 |
| SANDWICH / SALAD PREPARATION REFRIGERATOR | 46 |
| SECURITY UNIT | 46 |
| SELF-SERVICE REFRIGERATED OPEN AIR SCREEN CASE | 46 |
| SHELVING UNIT, HYBRID POLY/WIRE WITH POLYMER POST | 47 |
| SOFT SERVE MACHINE | 47 |
| STEAMER, CONVECTION, BOILERLESS, COUNTERTOP | 48 |
| STEAMER, PRESSURE, ELECTRIC | 48 |
| STEAMER, PRESSURE, GAS | 48 |
| THREE (3) COMPARTMENT SINK | 48 |
| TILTING SKILLET BRAISING PAN, ELECTRIC | 48 |
| TILTING SKILLET BRAISING PAN, GAS | 48 |
| TOASTER, POP-UP | 49 |
| TWO (2) COMPARTMENT SINK | 49 |

| | |
|---------------------------------|----|
| UNDERCOUNTER REFRIGERATOR | 49 |
| VEGETABLE CUTTER ATTACHMENT | 49 |
| WARMING DRAWER, FREE STANDING | 50 |
| WINE REFRIGERATOR | 50 |
| WIRE SHELVING UNIT | 50 |
| WORK TABLE, STAINLESS STEEL TOP | 50 |

**Maywood Furniture
ML30RDPED3042
Adjustable Height Table**

**Qty Available: 1
\$364.78 ea**

Standard Pedestal Table, round top, plastic laminated 5/8" plywood top (edge to be specified), chrome plated steel columns with die cast aluminum base and mounting plate, 30" dia., 30" & 42" high columns, chrome steel glides std.



**True Mfg. - General Foodservice
TBB-2-S-HC
Back Bar Cabinet, Refrigerated**

**Qty Available: 1
\$4,488.39 ea**

Back Bar Cooler, two-section, 58-7/8"W, (88) 6-packs or (2) 1/2 keg capacity, (4) shelves, condensing unit on left, stainless steel top, (2) full doors with locks, LED interior lights, galvanized interior with stainless steel floor, stainless steel exterior, R290 Hydrocarbon refrigerant, 1/4 HP, 115v/60/1-ph, 2.8 amps, NEMA 5-15P, cULus, UL EPH Classified, Made in USA, ENERGY STAR®



**True Mfg. - General Foodservice
TBB-24-48G-S-HC-LD
Back Bar Cabinet, Refrigerated**

**Qty Available: 1
\$5,762.60 ea**

Back Bar Cooler, two-section, 49-1/8"W, (48) 6-packs or (2) 1/2 keg capacity, (4) wire shelves, condensing unit on left, (2) glass doors with locks, LED interior light, stainless steel top, galvanized interior with stainless steel floor, stainless steel front & sides, aluminum back, R290 Hydrocarbon refrigerant, 1/5 HP, 115v/60/1-ph, 2.1 amps, NEMA 5-15P, cULus, UL EPH Classified, Made in USA, ENERGY STAR®



**True Mfg. - General Foodservice
TBB-24-60-S-HC
Back Bar Cabinet, Refrigerated**

**Qty Available: 1
\$5,966.02 ea**

Back Bar Cooler, two-section, 61-1/8"W, (72) 6-packs or (3) 1/2 keg capacity, (4) wire shelves, condensing unit on left, (2) full doors with locks, LED interior lights, stainless steel top, galvanized interior with stainless steel floor, stainless steel front & sides, aluminum back, R290 Hydrocarbon refrigerant, 1/4 HP, 115v/60/1-ph, 2.7 amps, NEMA 5-15P, cULus, UL EPH Classified, Made in USA



**True Mfg. - General Foodservice
TBB-24-48-S-HC
Back Bar Cabinet, Refrigerated**

**Qty Available: 1
\$5,497.89 ea**

Back Bar Cooler, two-section, 49-1/8"W, (48) 6-packs or (2) 1/2 keg capacity, (4) wire shelves, condensing unit on left, (2) full doors with locks, LED interior lights, stainless steel top, galvanized interior with stainless steel floor, stainless steel front & sides, aluminum back, R290 Hydrocarbon refrigerant, 1/5 HP, 115v/60/1-ph, 2.1 amps, NEMA 5-15P, cULus, UL EPH Classified, Made in USA



**Beverage Air
BB58HC-1-B
Back Bar Cabinet, Refrigerated**

**Qty Available: 1
\$3,163.75 ea**

Refrigerated Back Bar Storage Cabinet, two-section, 59"W, 37-1/4" H, 21.86 cu. ft., (2) solid doors, snap-in door gasket, (4) epoxy coated steel shelves, (2) 1/2 barrel kegs, LED interior lighting with manual on/off switch, stainless steel top, black exterior finish, galvanized interior, left-mounted self-contained refrigeration with storage above, R290 Hydrocarbon refrigerant, 1/4 HP, cULus, UL EPH Classified, UL-Sanitation, Made in USA



**True Mfg. - General Foodservice
TBB-24-60G-S-HC-LD
Back Bar Cabinet, Refrigerated**

**Qty Available: 1
\$6,269.89 ea**

Back Bar Cooler, two-section, 61-1/8"W, (72) 6-packs or (3) 1/2 keg capacity, (4) wire shelves, condensing unit on left, (2) glass doors with locks, LED interior light, stainless steel top, galvanized interior with stainless steel floor, stainless steel front & sides, aluminum back, R290 Hydrocarbon refrigerant, 1/4 HP, 115v/60/1-ph, 2.7 amps, NEMA 5-15P, cULus, UL EPH Classified, Made in USA, ENERGY STAR®



**Taylor Company (Middleby)
104
Batch Freezer**

**Qty Available: 1
\$6,954.00 ea**

Batch Ice Cream freezer, counter model, air-cooled, self-contained, (1) 3 QT freezing cylinder, automatic timer control, funnel, stainless steel finish, R449A, (1) 1.0 HP motor, NSF, CE (select 50/60HZ models), cULus listed (Visit the Taylor website link to locate your distributor for pricing and warranty information)



**Traulsen
TBC1H-20
Blast Chiller, Roll-In**

**Qty Available: 1
\$66,819.17 ea**

Spec-Line Roll-In Blast Chiller with EPICON Control, holds (1) 27"W x 29"D x 72"H rack, self-contained holding refrigeration system, remote chilling refrigeration system not included, chills (300 lbs) 160°F to 40°F /155 minutes, hinged left, cETLus, NSF



**Traulsen
TBC5-50
Blast Chiller, Undercounter**

**Qty Available: 1
\$28,013.59 ea**

Spec-Line Undercounter Blast Chiller with EPICON Control, 9.2 cu. ft., self-contained refrigeration, (1) right hinged door, chills (100 lbs) 160°F to 40°F /180 minutes, (4) chill settings, (5) 18" x 26" pans or (10) 12" x 20" x 2-1/2" pans, touch screen control, USB port, auto defrost, (3) removable food probes, stainless steel interior, stainless steel exterior (sides, front & bullnose top), 6" casters, non-flammable R-448A refrigerant, 3/4 HP, cETLus, NSF



**Vitamix
036019
Blender, Bar**

**Qty Available: 1
\$1,247.63 ea**

(MEXICO ONLY) The Quiet One® Blender, countertop, 48 oz. (1.4 liter) capacity, clear Tritan™ BPA free Advance® container, 24-1/2"H with lid open, stackable, removable compact cover, (6) touch control buttons with (34) program options, includes: Advance® blade assembly & lid, 3-peak HP, 120v/50/60/1-ph, 15.0 amps, NEMA 5-15P, RoHs compliant, CE, cULus, NSF



**Vitamix
062825
Blender, Bar**

**Qty Available: 1
\$558.78 ea**

Drink Machine Advance® (VM0100A), stackable 48 oz. (1.4 liter) clear BPA Free Tritan™ Advance® container, includes (6) pre-loaded programs, includes: Advance® blade assembly & lid, red base, 2.3 peak HP, 120v/50/60/1-ph, 11.5 amps, NEMA 5-15P, cULus, NSF



**Hatco
C-54
Booster Heater, Electric**

**Qty Available: 1
\$4,809.60 ea**

Compact Booster Heater, electric, 6 gallon storage capacity, electric operation, stainless steel front panel, powder-coated silver-gray hammertone body, 6" plastic non-adjustable legs, Castone® lined tank, 54.0kW, NSF, cULus, Made in USA



**Vulcan
VIR1SF
Broiler, Deck-Type, Gas**

**Qty Available: 1
\$27,806.32 ea**

V Series Deck-Broiler, Heavy Duty range match, Gas, single-deck infrared burners, 25-1/2" x 24-1/2" cooking grid, spring balanced, 5 position grip, standard oven base, stainless steel front, top front ledge & sides, 6" stainless steel legs, 1-1/4" front gas manifold, 150,000 BTU, NSF, CSA Star, CSA Flame



**Vulcan
VST4B
Broiler, Deck-Type, Gas**

**Qty Available: 1
\$21,287.09 ea**

Heavy Duty Chophouse Broiler, 45" wide, gas, (3) 45,000 BTU burners, over-fired deck type, 4-position adjustable broiler grid, 1/2" certified griddle plate on top with 2" side & backsplashes, front grease trough, stainless steel front, sides, legs & undershelf, casters, 135,000 BTU, CSA, NSF



**Southbend (Middleby)
270
Broiler, Deck-Type, Gas**

**Qty Available: 1
\$28,591.80 ea**

(QUICK SHIP) Broiler, gas, double-deck, free standing, infrared, enclosed base, stainless steel top, front, sides & 6" adjustable legs, 208,000 BTU, CSA, NSF (Ships within 2 days, maximum quantity = 2 per order)



**Vulcan
VIR1F
Broiler, Deck-Type, Gas**

**Qty Available: 1
\$18,861.72 ea**

V Series Deck-Broiler, Heavy Duty range match, Gas, single-deck infrared burners, 25-1/2" x 24-1/2" cooking grid, spring balanced, 5 position grip, modular, stainless steel front, top front ledge & sides, 6" stainless steel legs, 1-1/4" front gas manifold, 100,000 BTU, NSF, CSA Star, CSA Flame (* for refrigerated base mount only)



**Spring USA
QS7230
Buffet Display Server Set**

**Qty Available: 1
\$9,078.48 ea**

Buffet Table, 72" x 30" x 37-1/2"H, (3) undermounted 650 watt induction ranges, (1) power strip, (4) stainless steel legs with casters, (2) locking casters, Snow Smartstone® table top, dark walnut wood edge, 120v/50/60/1-ph, 20 amps, NEMA 5-20P, Quick Ship (Stock Item)



**Hatco
GR2BW-36
Buffet Warmer**

**Qty Available: 1
\$2,935.20 ea**

Glo-Ray® Buffet Warmer, counter model, pass thru design, hardcoat aluminum double acrylic sneeze guards, (2) bulbs, holds (2) 12" x 20" pans capacity, designer panels & corner caps, heated base, CE, cULus, UL EPH Classified, Made in USA



**Hatco
GR2BW-72
Buffet Warmer**

**Qty Available: 1
\$4,896.00 ea**

Glo-Ray® Buffet Warmer, counter model, pass thru design, hardcoat aluminum double acrylic sneeze guards, (6) bulbs, holds (5) 12" x 20" pans capacity, designer panels & corner caps, heated base, 4" legs, CE, cULus, UL EPH Classified, Made in USA



**Hatco
GR2BW-48
Buffet Warmer**

**Qty Available: 1
\$3,553.20 ea**

Glo-Ray® Buffet Warmer, counter model, pass thru design, hardcoat aluminum double acrylic sneeze guards, (4) bulbs, holds (3) 12" x 20" pans capacity, designer panels & corner caps, heated base, 4" legs, CE, cULus, UL EPH Classified, Made in USA



**Hatco
GRHW-2P
Buffet Warmer**

**Qty Available: 1
\$1,722.00 ea**

Glo-Ray® Hors D'Oeuvre Warmer, countertop unit with heated base, infrared top heat, buffet style sneeze guard, lighted rocker switch, with 4" legs, 1640 watts, CE, cULus, UL EPH Classified, Made in USA



**Cres Cor
2071812SD
Bun / Sheet Pan Rack**

**Qty Available: 1
\$1,182.98 ea**

Utility Rack, mobile, angle ledge, super duty, full height, open sides, riveted pan slides with extruded angles, 5-1/8" centers, (24) 14" x 18" tray or (12) 18" x 26" pan capacity, end loading, fully welded Hi-Tensile aluminum frame construction, (4) 5" swivel casters (2) braked, NSF



**Carter-Hoffmann (Middleby)
CH1600
Cabinet, Cook / Hold / Oven**

**Qty Available: 1
\$13,382.89 ea**

Cook & Hold Cabinet, electric, (16) 18" x 26" sheet pan capacity, 240 lb. approximate meat capacity, digital controls, cook to time or temperature, meat probe included, stainless steel construction, (4) 5" casters (2 with brakes), NSF, cULus, CE



**Carter-Hoffmann (Middleby)
CH1800
Cabinet, Cook / Hold / Oven**

**Qty Available: 1
\$12,688.19 ea**

Cook & Hold Cabinet, electric, (18) 18"x 26" sheet pan capacity, 240 lb. approximate meat capacity, digital controls, cook to time or temperature, meat probe included, stainless steel construction, (4) 5" casters (2 with brakes), NSF, cULus, CE



**Carter-Hoffmann (Middleby)
CH600
Cabinet, Cook / Hold / Oven**

**Qty Available: 1
\$6,739.91 ea**

Cook & Hold Cabinet, electric, (6) 18" x 26" sheet pan capacity, 80 lb. approximate meat capacity, digital controls, cook to time or temperature, meat probe included, stainless steel construction, (4) 5" casters (2 with brakes), NSF, cULus, CE



**Carter-Hoffmann (Middleby)
CH750
Cabinet, Cook / Hold / Oven**

**Qty Available: 1
\$6,572.14 ea**

Cook & Hold Cabinet, under-counter, electric, (10) 12" x 20" sheet pan capacity, 100 lb. approximate meat capacity, digital controls, cook to time or temperature, meat probe included, stainless steel construction, (4) 2" casters (2 with brakes), cULus, NSF



**Cres Cor
1001841D
Cabinet, Enclosed, Bun / Food Pan**

**Qty Available: 1
\$1,690.85 ea**

Transport Storage Cabinet, mobile, enclosed, 69-3/4" high, single wall non-insulated, corrugated side walls hold (40) 18" x 26" pans slides on 1-1/2" centers, reinforced door swings 270°, gravity type latch, card clip included, (4) 5" swivel casters (2) braked, Hi-Tensile aluminum exterior & interior, NSF



**New Age
1225
Can Rack**

**Qty Available: 1
\$854.40 ea**

Can Storage Rack, mobile, half-size, aluminum construction with stainless top, sloped glides, accommodates (72) #10 cans or (96) #5 cans, (2) swivel/brake & (2) rigid 5" platform casters, NSF, Made in USA, (standard factory lead time)



**New Age
1250CK
Can Rack**

**Qty Available: 1
\$980.16 ea**

Can Storage Rack, mobile design with casters, sloped glides for automatic can retrieval, aluminum construction, holds (162) #10 or (216) #5 cans, (4) 6" plate casters, (2) swivel with brakes, (2) rigid, NSF, Made in USA, (standard factory lead time)



**New Age
1256
Can Rack**

**Qty Available: 1
\$1,118.40 ea**

Can Storage Rack, stationary design with adjustable feet, sloped glides for automatic can retrieval, aluminum construction, holds (216) #10 or (297) #5 cans, NSF, Made in USA, (standard factory lead time)



**New Age
97294CK
Can Rack**

**Qty Available: 1
\$3,025.92 ea**

First In, First Out Can Rack, mobile, with sloped glides for automatic can retrieval, holds (156) #10 cans, front edge turned up, welded aluminum construction, 6" platform casters (2) swivel with brakes C495, 2 rigid C500, Made in USA, NSF (standard factory lead time)



**Alto-Shaam
CS-100
Carving Station / Shelf**

**Qty Available: 1
\$1,773.95 ea**

Hot Carving Shelf, 31" x 18-3/8" x 25-1/2", indicator light, infrared lamp, (3) position HI/LOW/OFF toggle switch, cutting board, 35 lb. max capacity, recessed surface, 1" legs, 18 gauge stainless steel construction, EcoSmart®, cULus, NSF, CE, EAC



**Alto-Shaam
CS-200/S
Carving Station / Shelf**

**Qty Available: 1
\$2,697.32 ea**

Hot Carving Shelf, 33" x 25-3/4" x 30-15/16", indicator light, infrared lamp, (3) position HI/LOW/OFF toggle switch, cutting board, 70 lb. max capacity, recessed surface, framed clear glass breath guard, 1" legs, 18 gauge stainless steel construction, EcoSmart®, cULus, NSF, CE, EAC



**Winholt Equipment
ALC-1840
Channel Pan Rack**

**Qty Available: 1
\$422.97 ea**

Mobile Pan Rack, full height, open sides, with slides for (40) 18"x26" pans, welded channel aluminum frame, end loading, 5" swivel stem casters, NSF



**Crown Verity
CV-BM-60
Charbroiler, Charcoal, Outdoor Grill**

**Qty Available: 1
\$1,098.00 ea**

Outdoor Charbroiler, Charcoal, 72"L x 24"D, 60" x 24" height adjustable grill area, high heat enamel finish, 14 gauge cold rolled steel construction, removable heavy duty grill, removable legs with 5" swivel casters



**Wells (Middleby)
B-40
Charbroiler, Electric, Countertop**

**Qty Available: 1
\$5,027.40 ea**

Charbroiler, countertop, electric, 4" high legs, cast iron grate, 24" wide, stainless steel construction, with grease pan and scraper/brush, UL, CE



**Magikitch'n (Middleby)
FM-SMB-636
Charbroiler, Gas, Floor Model**

**Qty Available: 1
\$10,799.45 ea**

Coal Charbroiler, floor model, gas, 36"W x 35-1/2"D x 39-1/2"H overall size, free floating round rod top grate with EZ tilt to front grease trough, ceramic briquettes, standing pilot, 6" service shelf with utility bar, water tubs, open cabinet base, top grid scraper, 6" adjustable legs, CSA Flame, CSA Star, NSF



**Magikitch'n (Middleby)
FM-SMB-648
Charbroiler, Gas, Floor Model**

**Qty Available: 1
\$13,182.96 ea**

Coal Charbroiler, floor model, gas, 48"W x 35-1/2"D x 39-1/2"H overall size, free floating round rod top grate with EZ tilt to front grease trough, ceramic briquettes, standing pilot, 6" service shelf with utility bar, water tubs, open cabinet base, top grid scraper, 6" adjustable legs, CSA Flame, CSA Star, NSF



**Magikitch'n (Middleby)
FM-SMB-660
Charbroiler, Gas, Floor Model**

**Qty Available: 1
\$15,555.98 ea**

Coal Charbroiler, floor model, gas, 60"W x 35-1/2"D x 39-1/2"H overall size, free floating round rod top grate with EZ tilt to front grease trough, ceramic briquettes, standing pilot, 6" service shelf with utility bar, water tubs, open cabinet base, top grid scraper, 6" adjustable legs, CSA Flame, CSA Star, NSF



**Magikitch'n (Middleby)
LPAGA-60S-LP
Charbroiler, Gas, Outdoor Grill**

**Qty Available: 1
\$11,193.43 ea**

MagiCater AGA Approved
Transportable Gas Grill, liquid propane, 60", (8) burners, stainless steel radiants, (2) nickel-chrome plated top grates, 8" work deck, individual control valves, (2) 30" roll-top hoods, (2) 40 pound tank in removable tank cart, pressure regulator, stainless steel construction, (4) swivel casters, 160,000 BTU, CSA Flame, CSA Star, NSF



**Crown Verity
CV-MCB-72
Charbroiler, Gas, Outdoor Grill**

**Qty Available: 1
\$4,513.50 ea**

Mobile Outdoor Charbroiler, LP gas, 70"x21" grill area, 10 burners, 304 stainless steel construction, stainless steel grill, radiants, lighter tube (pilot), water pan, includes hose & regulator, undershelf, legs with (2) 14" wheels & (2) total lock caster



**Crown Verity
CV-MCB-60
Charbroiler, Gas, Outdoor Grill**

**Qty Available: 1
\$4,022.10 ea**

Mobile Outdoor Charbroiler, LP gas, 58" x 21" grill area, 8 burners, 304 stainless steel construction, stainless steel grill, radiants, lighter tube (pilot), water pan, includes hose & regulator, undershelf, legs with (2) 14" wheels & (2) total lock caste



**Vulcan
1048
Cheesemelter, Electric**

**Qty Available: 1
\$3,735.50 ea**

Cheesemelter, electric, 50", (4) rack positions, solid state controls, quartz infrared tube heating elements, stainless steel exterior and interior finish, includes: 4" adjustable legs for countertop installation & wall mounting panel, 4.8 kW, CSA, UL, NSF



**BUNN
39200.0000
Coffee Brewer**

**Qty Available: 1
\$3,915.38 ea**

39200.0000 Titan® Dual Brewer, 34.3 gallon per hour, coffee extraction controlled with pre-infusion & pulse brew, digital temperature control, large spray head, BrewMETER®, SplashGard® funnel, locks & 28 ounce capacity and paper filter retainers, hot water faucet, Energy-saver mode, stainless steel insulated servers (sold separately), UL, NSF



**BUNN
39300.0000
Coffee Brewer**

**Qty Available: 1
\$2,936.46 ea**

39300.0000 Titan® Single Brewer, 22.5 gallon per hour, coffee extraction controlled with pre-infusion & pulse brew, digital temperature control, large spray head, BrewMETER®, SplashGard® funnel, locks & 28 ounce capacity and paper filter retainers, hot water faucet, Energy-saver mode, stainless steel insulated servers (sold separately), 12,000 watts, UL, NSF



**BUNN
34800.0003
Coffee Brewer**

**Qty Available: 1
\$1,422.49 ea**

34800.0003 SINGLE TF DBC® BrewWISE® ThermoFresh Coffee Single Brewer, 11.4 gal/hr, coffee extraction controlled with pre-infusion & pulse brew, digital temperature control, large spray head, stores individual recipes, funnel locks, smart funnel, wireless brewer-grinder interface, stainless steel finish, holds 1-1/2 gallon ThermoFresh server (server sold separately), 120/208v/60/1-ph, 4000w, 19.2amps, UL, NSF



**BUNN
34600.0006
Coffee Brewer**

**Qty Available: 1
\$2,474.04 ea**

34600.0006 DUAL TF DBC® BrewWISE® ThermoFresh® Coffee Brewer, 16.3 gal/hr, coffee extraction controlled with pre-infusion & pulse brew, digital temperature control, large spray head, automatic programming, stores individual recipes, SplashGard® & optional funnel locks, stainless steel finish, lower hot water faucet, wireless brewer-grinder interface, holds (2) 1-1/2 gallon ThermoFresh servers (servers sold separately), 120/208v/60/1-ph, 5700w, 27.4amps, UL, NSF



BUNN
36600.0000
Coffee Brewer

Qty Available: 1
 \$820.26 ea

36600.0000 ICB-DV Infusion Series® Coffee Brewer, dual voltage adaptable, single brewer, (3) brew buttons, (2) programmable batch full/half batch switches, smart funnel, brews into 2.5 to 3.8 liter airpots & 1 to 1.5 gallon baseless TF servers (sold separately), digital display in English/Spanish, energy-saver mode, stainless steel finish, operates at 120v (15amp), or 120/208v-240v (20amp), NSF, UL



BUNN
37600.0002
Coffee Brewer

Qty Available: 1
 \$1,332.53 ea

37600.0002 ICB-TWIN Infusion Series® Coffee Brewer, brews 18.9 gallons per hour capacity, (3) brew buttons, (2) programmable full/half batch switches, smart funnel, brews into 2.5 to 3.8 litre airpots & 1 to 1.5 gallon baseless TF servers (sold separately), digital display in English/Spanish, energy-saver mode, stainless steel finish, 120/208v/60/1-ph, 6000w, 28 amps, cord attached, UL, NSF



BUNN
33700.0001
Coffee Grinder

Qty Available: 1
 \$1,682.58 ea

33700.0001 G9-2T DBC Coffee Grinder, portion control, dual 6 lb. hoppers, 3 batch sizes per hopper, black decor, high volume capacity, smart funnel allows for wireless brewer-grinder interface, 3/4 HP, 1080 watts, 120v/60/1-ph, 9.4amps, 1080 watts, cord attached, NEMA 5-15P, UL, cULus, ETL



Atlas Metal
WCM-BT-4
Cold Food Well Unit, Drop-In, Refrigerated

Qty Available: 1
 \$8,512.85 ea

Cold Food Drop-In Unit, refrigerated cold pan, airflow design, 4-pan size, self-contained refrigeration, insulated pan, with on/off switch, pilot light & automatic defrost system, stainless steel inner liner & top, galvanized steel outer liner, R134A refrigerant, 1/3 HP, UL



RATIONAL
ICC 10-HALF E 480V 3 PH
(Combi Oven), Electric

Qty Available: 1
 \$13,247.20 ea

(CD2ERRA.0000253) iCombi Classic® 10-Half Size Combi Oven, electric, (10) 13" x 18" sheet pan or (10) 12" x 20" steam pan or (10) 1/1 GN pan capacity, digital color display screen with push button control, (3) manual operating modes: steam, convection & combination, 85° to 572°F temperature range, (100) program slots, core temperature probe, retractable hand shower, 5-speed fan, (4) automatic cleaning programs, integrated care system, 480v/60Hz/3-ph, 18.9 kW, CE, IPX5, UL, cULus, NSF, ENERGY STAR®



RATIONAL
ICC 10-FULL E 480V 3 PH
(Combi Oven), Electric

Qty Available: 1
 \$19,141.63 ea

(CE2ERRA.0000259) iCombi Classic® 10-Full Size Combi Oven, electric, (10) 18" x 26" sheet pan or (20) 12" x 20" steam pan or (10) 2/1 GN pan capacity, (5) stainless steel grids included, digital color display screen with push button control, (3) manual operating modes: steam, convection & combination, 85° to 572°F temperature range, (100) program slots, core temperature probe, retractable hand shower, 5-speed fan, (4) automatic cleaning programs, integrated care system, 480v/60Hz/3-ph, 37.4 kW, IPX5, UL, cULus, NSF



RATIONAL
ICC 20-FULL E 480V 3 PH
(Combi Oven), Electric

Qty Available: 1
 \$35,122.37 ea

(CG2ERRA.0000265) iCombi Classic® 20-Full Size Combi Oven, electric, (20) 18" x 26" sheet pan or (40) 12" x 20" steam pan or (20) 2/1 GN pan capacity, mobile oven rack & (10) stainless steel grids included, digital color display screen with push button control, (3) manual operating modes: steam, convection & combination, 85° to 572°F temperature range, (100) program slots, core temperature probe, retractable hand shower, 5-speed fan, (4) automatic cleaning programs, integrated care system, 480v/60Hz/3-ph, 67.9 kW, IPX5, UL, cULus, NSF



Alto-Shaam
CTC6-10E
Combi Oven, Electric

Qty Available: 1
 \$13,696.59 ea

Combitherm® CT Classic™ Combi Oven/Steamer, electric, boilerless, countertop, (7) 18" x 13" half size sheet pans or (7) 12" x 20" full size hotel (1/1 GN) pan capacity, classic control with steam/convection/combi cooking modes, SafeVent™ steam venting, CombiClean™ with (1) cleaning level, CoolTouch3™ glass window, door hinged right, high efficiency LED lighting, (2) side racks with (7) non-tilt support rails, stainless steel construction, adjustable stainless steel legs, EcoSmart®, cULus, UL EPH Classified, CE, IPX5, EAC, city-wide COA for New York City (Model CTC 6-10EVH)



**Alto-Shaam
CTP6-10E
Combi Oven, Electric**

**Qty Available: 1
\$16,120.24 ea**

Combitherm® CT PROformance™ Combi Oven/Steamer, electric, boilerless, countertop, capacity (7) 18" x 13" half size sheet or (7) 12" x 20" full size hotel (1/1 GN) pan capacity, PROtouch control with steam/convection/Combi/retherm modes, removable single-point temperature probe, (2) power levels, (4) cooking modes, programmable cool-down, SafeVent™ steam venting, CombiClean PLUS™ with (5) cleaning levels, CoolTouch3™ glass window, door hinged right, high efficiency LED lighting, (2) side racks with (7) non-tilt support rails, stainless steel construction, adjustable stainless steel legs, EcoSmart®, cULus, UL EPH Classified, CE, IPX5, EAC, city-wide COA for New York City (Model CTP 6-10EVH)



**Alto-Shaam
CTX4-10E
Combi Oven, Electric**

**Qty Available: 1
\$10,799.13 ea**

Combitherm® CombiOven, electric, countertop, (5) 12" x 20" full size hotel or (10) 18" x 13" half size sheet pan capacity, ExpressTouch control includes two-speed reversing fan, retherm mode, moisture injection, 6 browning levels, reduced energy levels, steam venting, delayed start time, shelf timer and USB port, includes: CombiClean® system & hand sprayer kit, (2) shelves, stainless steel construction, adjustable bullet legs, EcoSmart®, cULus, UL EPH ANSI/NSF 4, CE, EAC, IPX4



**Alto-Shaam
CTX4-10E/S
Combi Oven, Electric**

**Qty Available: 1
\$8,925.11 ea**

Combitherm® CombiOven, electric, countertop, (5) 12" x 20" full size hotel or (10) 18" x 13" half size sheet pan capacity, simple control includes single speed motor, includes: CombiClean® system & hand sprayer kit, (2) shelves, stainless steel construction, adjustable bullet legs, EcoSmart®, cULus, UL EPH ANSI/NSF 4, CE, EAC, IPX4



**Alto-Shaam
CTX4-10EC
Combi Oven, Electric**

**Qty Available: 1
\$11,683.84 ea**

Combitherm® CombiOven, electric, countertop, (5) 12" x 20" full size hotel or (10) 18" x 13" half size sheet pan capacity, ExpressTouch control includes two-speed reversing fan, retherm mode, moisture injection, 6 browning levels, reduced energy levels, steam venting, delayed start time, shelf timer and USB port, integrated catalytic converter allows for ventless operation, includes: CombiClean® system & hand sprayer kit, (2) shelves, stainless steel construction, adjustable bullet legs, EcoSmart®, cULus, UL EPH ANSI/NSF 4, CE, EAC, IPX4



**Alto-Shaam
CTX4-10EVH
Combi Oven, Electric**

**Qty Available: 1
\$15,506.94 ea**

Combitherm® CombiOven, electric, countertop, with ventless hood, (5) 12" x 20" full size hotel or (10) 18" x 13" half size sheet pan capacity, ExpressTouch control includes two-speed reversing fan, retherm mode, moisture injection, 6 browning levels, reduced energy levels, steam venting, delayed start time, shelf timer and USB port, includes: CombiClean® system & hand sprayer kit, (2) shelves, stainless steel construction, adjustable bullet legs, EcoSmart®, cULus, UL EPH ANSI/NSF 4, CE, EAC, IPX4, city-wide COA for New York City



**RATIONAL
ICC 10-HALF NG 120V 1 PH
(1012006), Gas**

**Qty Available: 1
\$15,363.50 ea**

(CD2GRR.0000270) iCombi Classic® 10-Half Size Combi Oven, natural gas, (10) 13" x 18" sheet pan or (10) 12" x 20" steam pan or (10) 1/1 GN pan capacity, digital color display screen with push button control, (3) manual operating modes: steam, convection & combination, temperature range 85° to 572°F, (100) program slots, core temperature probe, retractable hand shower, 5-speed fan, (4) automatic cleaning programs, integrated care system, 83,500 BTU, 120v/60Hz/1-ph, 6 ft. cord, 0.9 kW, IPX5, cCSAus, NSF



**RATIONAL
ICC 10-FULL NG 208/240V 1 PH
(1012006), Gas**

**Qty Available: 1
\$22,193.98 ea**

(CE2GRR.0000275) iCombi Classic® 10-Full Size Combi Oven, natural gas, (10) 18" x 26" sheet pan or (20) 12" x 20" steam pan or (10) 2/1 GN pan capacity, (5) stainless steel grids included, digital color display screen with push button control, (3) manual operating modes: steam, convection & combination, temperature range 85° to 572°F, (100) program slots, core temperature probe, retractable hand shower, 5-speed fan, (4) automatic cleaning programs, integrated care system, 152,000 BTU, 208/240v/60Hz/1-ph, 1.5 kW, IPX5, 6 ft. cord, cCSAus, NSF



**RATIONAL
ICC 20-FULL NG 208/240V 1 PH
(1012006), Gas**

**Qty Available: 1
\$39,680.55 ea**

(CG2GRR.0000280) iCombi Classic® 20-Full Size Combi Oven, natural gas, (20) 18" x 26" sheet pan or (40) 12" x 20" steam pan or (20) 2/1 GN pan capacity, mobile oven rack & (10) stainless steel grids included, digital color display screen with push button control, (3) manual operating modes: steam, convection & combination, temperature range 85° to 572°F, (100) program slots, core temperature probe, retractable hand shower, 5-speed fan, (4) automatic cleaning programs, integrated care system, 305,500 BTU, 208/240v/60Hz/1-ph, 2.2 kW, 6 ft. cord, IPX5, cCSAus, NSF



**Alto-Shaam
CTC20-10G
Combi Oven, Gas**

**Qty Available: 1
\$34,537.52 ea**

Combitherm® CT Classic™ Combi Oven/Steamer, gas, boilerless, floor model with roll-in cart, (20) non-tilt support rails, (20) 18" x 13" half size sheet or (20) 12" x 20" full size hotel pan (1/1 GN) capacity, classic control with steam/convection/combi cooking modes, SafeVent™ steam venting, CombiClean™ with (1) cleaning level, CoolTouch3™ glass window, door hinged right, high efficiency LED lighting, stainless steel construction, seismic legs, 140,000 BTU, EcoSmart®, cULus, UL EPH Classified, CE, IPX5, Gastec, EAC



**Alto-Shaam
CTC20-20G
Combi Oven, Gas**

**Qty Available: 1
\$46,670.15 ea**

Combitherm® CT Classic™ Combi Oven/Steamer, gas, boilerless, floor model with roll-in cart, (20) non-tilt support rails, (20) 18" x 26" full size sheet, (20) GN 2/1, or (40) 12" x 20" full size hotel pan (1/1 GN) capacity, classic control with steam/convection/combi cooking modes, SafeVent™ steam venting, CombiClean™ with (1) cleaning level, CoolTouch3™ glass window, door hinged right, high efficiency LED lighting, stainless steel construction, seismic legs, 242,000 BTU, EcoSmart®, cULus, UL EPH Classified, CE, IPX5, Gastec, EAC



**Alto-Shaam
CTP20-10G
Combi Oven, Gas**

**Qty Available: 1
\$36,855.03 ea**

Combitherm® CT PROformance™ Combi Oven/Steamer, gas, boiler-free, floor model with roll-in cart, (20) non-tilt support rails, (20) 18" x 13" half size sheet or (20) 12" x 20" full size hotel pan (1/1 GN) capacity, PROtouch control with steam/convection/combi and retherm cooking modes, programmable cool-down, SafeVent™ steam venting, removable single-point temperature probe, (3) power levels, (4) cooking modes, CombiClean PLUS™ with (5) cleaning levels, CoolTouch3™ glass window, door hinged right, high efficiency LED lighting, stainless steel construction, seismic legs, 160,000 BTU, EcoSmart®, cULus, UL EPH Classified, CE, IPX5, Gastec, EAC



**Alto-Shaam
CTP20-20G
Combi Oven, Gas**

**Qty Available: 1
\$50,609.24 ea**

Combitherm® CT PROformance™ Combi Oven/Steamer, gas, boiler-free, floor model with roll-in cart, (20) non-tilt support rails, (20) 18" x 26" full size sheet or (40) 12" x 20" full size hotel pan (1/1 GN) capacity, PROtouch control with steam/convection/combi and retherm cooking modes, programmable cool-down, SafeVent™ steam venting, removable single-point temperature probe, (3) power levels, (4) cooking modes, CombiClean PLUS™ with (5) cleaning levels, CoolTouch3™ glass window, door hinged right, high efficiency LED lighting, stainless steel construction, seismic legs, 266,000 BTU, EcoSmart®, cULus, UL EPH Classified, CE, IPX5, Gastec, ENERGY STAR®



**Vitamix
062827
Commercial Food Blender**

**Qty Available: 1
\$496.38 ea**

Vita-Prep (VM0101), 64 oz. (2 liters) capacity, clear BPS-free Tritan™ standard container with wet blade assembly, manually-operated variable speed control, start/stop switch automatically returns to neutral position, includes: lid & tamper, black base, 2.3 peak HP, 120v/50/60/1-ph, 11.5 amps, NEMA 5-15P, cULus, NSF



**Vitamix
005201-1191
Commercial Food Blender**

**Qty Available: 1
\$2,064.45 ea**

XL® Blender System (VM0141A), variable speed, includes: (1) 1.5 gallon clear polycarbonate container complete with XL Blade assembly, lid, and tamper, Also includes: (1) 64 oz. clear BPA Free Tritan™ container complete with XL blade assembly and lid, 4.2 peak HP, 120v/50/60/1-ph, 15.0 amps, UL, NSF



**Danby
DAR026A1BDD
Compact Refrigerator**

**Qty Available: 1
\$201.60 ea**

Compact refrigerator with auto defrost All refrigerator Black exterior finish Dimension: 17-11/16" W x 20-1/16" D x 27" H Capacity: 2.6 cu ft.



**Vulcan
VC4ED
Convection Oven, Electric**

**Qty Available: 1
\$11,949.07 ea**

Convection Oven, electric, single-deck, standard depth, solid state controls, 60 minute timer, (5) nickel plated racks, 23-3/4"H legs with foot, stainless steel front, top & sides, stainless steel door with window, 1/2 HP, 12.5kW, NSF, cUL, UL, ENERGY STAR®



Vulcan
VC44ED-QS-PLATINUM
Convection Oven, Electric

Qty Available: 1
\$23,898.13 ea

(Quick Ship) Convection Oven, electric, double-deck, standard depth, solid state controls, temperature range 150° to 500°F, 60 minute timer with audible alarm per oven, oven cool switch for rapid cool down, independently operated stainless steel doors with double pane windows, porcelain enamel on steel oven interiors, (5) nickel plated racks per oven, stainless steel front, top, sides & 8"H legs, (2) 1/2 HP two speed oven blower-motors, 12 kW each section, NSF, cUL, UL, ENERGY STAR®



Vulcan
VC44GD
Convection Oven, Gas

Qty Available: 1
\$23,378.57 ea

Convection Oven, gas, double-deck, standard depth, solid state controls, electronic spark igniters, 60 minute timer, (5) nickel plated racks per oven, stainless steel front, top, sides & 8"H legs, stainless steel doors with windows, (2) 50,000 BTU, NSF, CSA Star, CSA Flame, ENERGY STAR®



Vulcan
SG44
Convection Oven, Gas

Qty Available: 1
\$24,828.76 ea

Convection Oven, gas, double-deck, solid state controls, electronic spark ignition, gentle bake mode selector switch, 60 minute timer with audible alarm, 150° to 500°F temperature range, stacking kit, (5) oven racks per section, independently operated doors with windows, porcelain enamel interior, stainless steel doors, front, sides, top & 8" legs, (2) 1/2 HP, (2) 60,000 BTU, CSA, NSF, ENERGY STAR®



Southbend (Middleby)
TVGS/12SC
Convection Oven, Gas

Qty Available: 1
\$7,635.24 ea

TruVection Convection Oven, gas, low-profile, single deck, electronic ignition, 150-550°F solid state thermostatic controls, 60 minute mechanical cook timer, oven interior light, cool down fan, includes (3) racks, porcelain oven interior, stainless steel door handle, front, sides, top & 6" legs, 1/2 HP, 52,000 BTU, CSA, NSF



Southbend (Middleby)
TVGS/22SC
Convection Oven, Gas

Qty Available: 1
\$15,270.47 ea

TruVection Convection Oven, gas, low-profile, double-deck, electronic ignition, 150-550°F solid state thermostatic controls, 60 minute mechanical cook timer, oven interior light, cool down fan, includes (3) racks per oven, porcelain oven interior, stainless steel door handle, front, sides, top & 6" legs, (2) 1/2 HP, 104,000 BTU, CSA, NSF



Vulcan
VC4GD-QS-PLATINUM
Convection Oven, Gas

Qty Available: 1
\$11,689.28 ea

(Quick Ship) Convection Oven, gas, single-deck, standard depth, solid state controls, electronic spark igniter, 60 minute timer, (5) nickel plated racks, 23-3/4"H legs with foot, stainless steel front, top & sides, stainless steel door with window, 50,000 BTU, NSF, CSA Star, CSA Flame, ENERGY STAR®



Vulcan
C24EA5-PS
Convection Steamer, Countertop

Qty Available: 1
\$15,700.68 ea

Convection Steamer, countertop, electric, PowerSteam™ Series with Superheated Steam, 1 compartment, 24" wide, (5) 12" x 20" x 2-1/2" pans capacity, high output stainless steel steam generator with Timed Smart Drain & Powerflush, staged water fill, professional controls with 60-minute timer, buzzer & constant steam feature, cook/ready lights & power switch, split water lines, stainless steel interior & exterior, leveling feet, cULus, UL EPH Classified



Cleveland Range
21CET16
Convection Steamer, Countertop

Qty Available: 1
\$12,685.46 ea

Steamcraft® Ultra 5 Convection Steamer, electric, countertop, 1 compartment, (5) 12 x 20 x 2-1/2" pans/compartment capacity, easyTimer 90-minute timer with dial and LED digital readout in minutes and seconds, includes SureCook load compensating thermostat, manual cooking mode and descale indicator, left-hand hinged door, controls on right, automatic water level and generator drain, steam shut-off switch, stainless steel construction, 16 kW



**Cleveland Range
21CGA5**

**Convection Steamer,
Countertop**

Steamcraft® Ultra 5 Convection Steamer, Gas, countertop, 1 compartment, (5) 12 x 20 x 2-1/2" pans/compartment capacity, easyTimer 90-minute timer with dial and LED digital readout in minutes and seconds, includes SureCook load compensating thermostat, manual cooking mode and descale indicator, automatic boiler blowdown, left-hand hinged door, controls on right, split water connection, steam shut-off switch, stainless steel construction, 70,000 BTU, 4" adjustable legs



**Qty Available: 1
\$18,189.44 ea**

**Cleveland Range
21CET8**

**Convection Steamer,
Countertop**

Steamcraft® Ultra 3 Convection Steamer, electric, countertop, 1 compartment, (3) 12 x 20 x 2-1/2" pans per compartment capacity, easyTimer 90-minute timer with dial and LED digital readout in minutes and seconds, includes SureCook load compensating thermostat, manual cooking mode and descale indicator, left-hand hinged door, controls on right, automatic boiler blowdown, steam shut-off switch, stainless steel construction, 8 kW



**Qty Available: 1
\$9,372.51 ea**

**Vulcan
C24ET10-PS**

Convection Steamer, Electric

ET Series Convection Steamer, PowerSteam™, electric, 2 compartments, 24" cabinet base, (10) 12" x 20" x 2-1/2" deep total pan capacity, dual high output stainless steel steam generators, 235°F superheated steam, Smart Drain system & Powerflush, individual professional controls with 60 minute timer, buzzer for each compartment, & constant steam feature, staged water fill, split water line, single drain connection, stainless steel interior & exterior, dual delime ports, leveling feet, 31.1kW, UL EPH, cULus Listed



**Qty Available: 1
\$31,828.74 ea**

**Vulcan
C24ET6-PS**

Convection Steamer, Electric

ET Series Convection Steamer, PowerSteam™, electric, 2 compartments, 24" cabinet base, (6) 12" x 20" x 2-1/2" deep total pan capacity, dual high output stainless steel steam generators, 235°F superheated steam, Smart Drain system & Powerflush, individual professional controls with 60 minute timer, buzzer for each compartment, & constant steam feature, staged water fill, split water line, single drain connection, stainless steel interior & exterior, dual delime ports, leveling feet, 18.1kW, UL EPH, cULus Listed



**Qty Available: 1
\$30,376.35 ea**

**Vulcan
C24GA10-PS**

Convection Steamer, Gas

Convection Steamer, Gas, PowerSteam™ Series with Superheated Steam, 2 compartments on 24" cabinet base, (10) 12" x 20" x 2-1/2" deep total pan capacity, staged water fill high output stainless steel steam generator with Timed Smart Drain & PowerFlush, auto blowdown, professional controls with 60 minute timer, buzzer for each compartment, & constant steam feature, split water line, stainless steel interior, exterior, frame & flanged feet, electric ignition, 125,000 BTU, CSA Flame, CSA Star, UL EPH Classified



**Qty Available: 1
\$32,445.78 ea**

**Vulcan
C24GA6-PS**

Convection Steamer, Gas

Convection Steamer, Gas, PowerSteam™ Series with Superheated Steam, 2 compartments on 24" cabinet base, (6) 12" x 20" x 2-1/2" deep total pan capacity, staged water fill high output stainless steel steam generator with Timed Smart Drain & PowerFlush, auto blowdown, professional controls with 60 minute timer, buzzer for each compartment, & constant steam feature, split water line, stainless steel interior, exterior, frame & flanged feet, 125,000 BTU, CSA Flame, CSA Star, UL EPH Classified



**Qty Available: 1
\$31,493.54 ea**

**Cleveland Range
24CGA10.2**

Convection Steamer, Gas

Steamcraft® Gemini™ 10 Convection Steamer, pressureless, gas, 2 compartments with individual generators, (5) 12 x 20 x 2-1/2" pans/compartment capacity, SureCook controls, easyTimer 90-minute timer with dial and LED digital readout in minutes and seconds, includes SureCook load compensating thermostat, manual cooking mode and descale indicator, left-hand hinged door, controls on right, 1 standard treated & tap water connection, stainless steel construction, 6" adjustable legs with flanged feet, 144,000 BTU total



**Qty Available: 1
\$29,020.41 ea**

**APW Wyatt (Middleby)
XTRM-3H**

Conveyor Toaster

X*Treme™ Conveyor Toaster, electric, countertop, (800) slices/hour capacity, 3"H opening, 13"W belt, top & bottom heat controls, pre-heat convection system, variable speed, air cooled, stainless steel front, top, & sides, painted aluminum front corners, 1" adjustable legs, UL Sanitation, cULus



**Qty Available: 1
\$3,637.68 ea**

**APW Wyatt (Middleby)
XTRM-1
Conveyor Toaster**

**Qty Available: 1
\$2,321.84 ea**

X*Press Conveyor Toaster, electric, countertop, (350) slices/hour capacity, 1-1/2"H opening, 10"W belt, metal sheathed heating elements, variable speed, power saving switch, stainless steel housing, painted aluminum front corners, 1" adjustable legs, UL Sanitation, cULus



**Star (Middleby)
QCS1-350
Conveyor Toaster**

**Qty Available: 1
\$1,276.34 ea**

(QUICK SHIP) (MIDDLEBY ESSENTIALS ITEM) Holman QCS® Conveyor Toaster, electric, 350 slices/hr., horizontal conveyor, analog speed control, standby switch, top & bottom quartz sheathed heater elements, 1-1/2" opening x 10" W belt (2 slices) with loading rack, stainless steel construction with smooth cool touch exterior, cULus, UL EPH Classified (ships within 4 days)



**Alto-Shaam
767-SK
Cook Hold Oven Cabinet
Smoker, Electric**

**Qty Available: 1
\$7,612.84 ea**

Halo Heat® Slo Cook Hold & Smoker Oven, electric, 100 lb. capacity - (9) 12" x 20" x 2-1/2" full-size pans, simple controller, includes (1) sample bag each of cherry, hickory, apple & maple wood chips, heavy-duty stainless steel exterior with solid door, stainless steel wire shelves, 1 rib rack, 3-1/2" casters; 2 rigid, 2 swivel with brakes, EcoSmart®, cULus, UL EPH ANSI/NSF 4, CE, IPX3, EAC, TUV NORD, N11942



**Alto-Shaam
1767-SK
Cook Hold Oven Cabinet
Smoker, Electric**

**Qty Available: 1
\$13,934.64 ea**

Halo Heat® Slo Cook Hold & Smoker Oven, electric, double-deck, standard depth, 100 lb. capacity each - (1) rib rack shelf per compartment, (9) 12" x 20" full-size pans, simple controller, includes (1) sample bag each of cherry, hickory, apple & maple wood chips, heavy-duty stainless steel construction with solid door, 5" casters; 2 rigid, 2 swivel with brakes, EcoSmart®, cULus, UL EPH ANSI/NSF 4, CE, IPX4, EAC, TUV NORD



**True Mfg. - General Foodservice
GDM-07F-HC~TSL01
Counter Freezer**

**Qty Available: 1
\$4,664.25 ea**

Freezer Merchandiser, countertop, True standard look version 01, (3) shelves, -10°F, (1) triple-pane thermal glass hinged door, LED interior lights, powder coated steel exterior, white interior with stainless steel floor, 2-1/2" legs, R290 Hydrocarbon refrigerant, 1/4 HP, 115v/60/1-ph, 2.9 amps, NEMA 5-15P, cULus, UL EPH Classified, CE, Made in USA, ENERGY STAR®



**True Mfg. - General Foodservice
GDM-07-S-HC~FGD01
Counter Refrigerator**

**Qty Available: 1
\$2,938.86 ea**

Refrigerated Merchandiser, countertop, True standard look version 01, (3) shelves, (1) Low-E thermal glass hinged door, LED interior lighting, door sign decal, stainless steel exterior, white aluminum interior with stainless steel floor, 2-1/2" legs, R290 Hydrocarbon refrigerant, 1/6 HP, 115v/60/1-ph, 1.9 amps, NEMA 5-15P, cULus, UL EPH Classified, CE, Made in USA, ENERGY STAR®



**Cres Cor
501D
Dish Cart / Dolly**

**Qty Available: 1
\$1,443.07 ea**

Dish Dolly, poker chip style, with two adjustable adapters, 4 section platform, compartments without adjustable adapters hold 9-7/8" to 10-3/4" dishes, compartments with adjustable adapters hold 4" to 7-1/4" dishes, CSA-Sanitation



**Metro
PCD11A
Dish Cart / Dolly**

**Qty Available: 1
\$1,071.84 ea**

Quick Ship - Poker Chip Dish Dolly, 26-5/8"W x 26-5/8"D x 31-15/16"H, adjustable, dish size 4-1/4" to 11-3/4", removable dividers & towers, two-handed access, recessed handles, 5" Dia. swivel casters with neoprene wheels (2 with brakes), chip-resistant polymer shell with Microban® antimicrobial protection, aesthetic blue, vinyl dust/water splash cover, NSF



Hobart
CL44EN-ADV+BUILDUP
Dishwasher, Conveyor Type

Qty Available: 1
\$50,206.80 ea

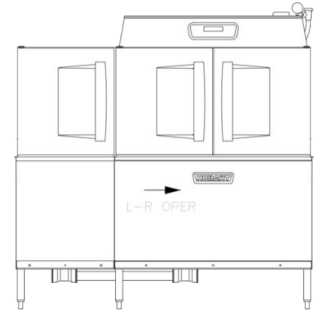
Conveyor Dishwasher, Advansys model, single tank, (202) racks/hour, insulated hinged doors, .62 gallon/rack, stainless steel enclosure panels, microprocessor controls with low temperature & dirty water indicators, NSF Pot & Pan mode, programable de-lime notification, 30 kW stainless booster, energy recovery (DWER), automatic soil removal (ASR), drain water tempering kit, ENERGY STAR®, Free factory startup for installations within a 100 mile radius of a Hobart service office; installation beyond 100 miles will be charged at the quoted rate by the local Hobart service office



Hobart
CLPS66EN-ADV+BUILDUP
Dishwasher, Conveyor Type

Qty Available: 1
\$69,174.00 ea

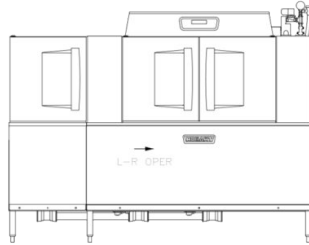
Conveyor Dishwasher, Advansys model, single tank with a Power Scrapper, (202) racks/hour, insulated hinged doors, .62 gallons/rack, stainless steel enclosure panels, microprocessor controls with low temperature & dirty water indicators, NSF Pot & Pan mode, programable de-lime notification, power scrapper vent cowl curtain kit, 30 kW stainless booster, energy recovery (DWER), automatic soil removal (ASR), drain water tempering kit, ENERGY STAR®, Free factory startup for installations within a 100 mile radius of a Hobart service office; installation beyond 100 miles will be charged at the quoted rate by the local Hobart service office



Hobart
CLPS86EN-BAS+BUILDUP
Dishwasher, Conveyor Type

Qty Available: 1
\$94,658.76 ea

Conveyor Dishwasher, (2) tank with a Power Scraper, (342) racks/hour, insulated hinged doors, .39 gallon/rack, stainless steel enclosure panels, microprocessor controls with low temperature & dirty water indicators, NSF Pot & Pan mode, programable de-lime notification, power scrapper vent cowl curtain kit, ENERGY STAR®, Free factory startup for installations within a 100 mile radius of a Hobart service office; installation beyond 100 miles will be charged at the quoted rate by the local Hobart service office



Hobart
AM15-2
Dishwasher, Door Type

Qty Available: 1
\$15,362.76 ea

Dishwasher, door type, hot water/chemical sanitizing, 58-65 racks/hour, straight-thru or corner, solid-state controls with digital status, with booster heater, electric tank heat, PRV included, auto-fill, stainless steel tank, frame, doors & feet, 208-240/60/3, 5 kW (machine); 208-240/60/3, 5 kW (booster) ENERGY STAR®



Champion
DH-2000 (40-70)
Dishwasher, Door Type

Qty Available: 1
\$10,682.15 ea

Versa-Clean Dishwasher, door type, high temperature with built-in 40° & 70° F rise electric booster, self-draining pump, 55 racks/hour capacity, auto-fill, stainless steel construction, electric tank heat, NSF, cULus, 1hp



Hobart
AM15VL-2
Dishwasher, Door Type, Ventless

Qty Available: 1
\$19,462.80 ea

Advansys Ventless Dishwashing Machine, door type, energy recovery, hot water sanitize, internal condensing system, 40 racks/hr, straight-thru or corner installation, solid-state controls with digital status, Sense-A-Temp™ 70°F rise booster heater, self-draining stainless steel pump & impeller, electric tank heat, automatic fill, revolving upper and lower wash arms & rinse arms, automatic drain closure, scrap screen and basket, door actuated start, stainless steel tank, tank shelf, chamber, trim panels, frame & feet, 208-240v/60/3-ph, cULus, NSF, ENERGY STAR®, Free factory startup for installations within a 100 mile radius of a Hobart service office; installation beyond 100 miles will be charged at the quoted rate by the local Hobart service office



Hobart
LXEH-2
Dishwasher, Undercounter

Qty Available: 1
\$9,933.00 ea

LXe Dishwasher, undercounter, 23-15/16"W x 25-9/16"D x 32-15/16"H, high temperature sanitizing, 120/208-240(3W)/60/1-ph, accommodates optional two-level racking accessory, (32) racks/hr, fresh water rinse, .74 gal/rack, delime notification, auto chemical priming, service diagnostics, detergent & rinse aid pump, cULus, NSF, ENERGY STAR®



Hobart
LXER-2
Dishwasher, Undercounter

Qty Available: 1
\$10,670.52 ea

Advansys™ Dishwasher, undercounter, 120/208-240(3W)/60/1, accommodates optional two-level racking accessory, 23-15/16"W x 26-13/16"D x 32-1/2"H, high temperature sanitizing, Energy Recovery, 30, 24, 13 Racks/Hour, Fresh Water Rinse, .62 gal/rack, Automated Delime Cycle, 3 selectable cycles - light, normal, heavy (Pot & Pan cycle on heavy cycle), Advanced Service Diagnostics, , Detergent, Rinse Aid & Delimer Pump, cULus, ENERGY STAR®, Free factory startup for installations within a 100 mile radius of a Hobart service office; installation beyond 100 miles will be charged at the quoted rate by the local Hobart service office



**Hobart
LXEC-3
Dishwasher, Undercounter**

**Qty Available: 1
\$9,028.32 ea**

Dishwasher, undercounter, 23-15/16"W x 25-9/16"D x 32-1/2"H, low temperature chemical sanitizing, 120v/60/1-ph, accommodates optional two-level racking accessory, (34) racks/hr, fresh water rinse, .74 gal/rack, delime notification, auto chemical priming, service diagnostics, detergent, rinse aid & sanitizer pumps., cULus, NSF, ENERGY STAR®



**Champion
UH130B
Dishwasher, Undercounter**

**Qty Available: 1
\$6,842.98 ea**

Dishwasher, undercounter, 24"W x 25"D x 33-3/4"H, high temperature sanitizing, with StemsSure™ soft start to protect glasses & dishes from chipping & breaking, (25) racks per hour capacity, 141 second cycle, top mounted controls with prime switch, 15-3/4"H door opening, door safety switch, advanced digital thermometer monitoring, stainless steel top & side panels, quiet double-wall construction, detergent & rinse aid pumps, pumped drain, built-in electric booster for 180°F final rinse water (standard 70°F/39°C rise), rinse sentry – extends the cycle time to ensure 180°F final rinse, low-water tank heat protection, automatic tank fill, (1) peg rack, (1) flat rack, 1 HP wash pump motor, fill & dump operation, Shear Energy – a reduction in energy requirements while maximizing performance, Multi-Power – includes: Multi-Volt & Multi-Phase (Allows for infield conversion to 208-240 volt and/or single to three phase with ease), NSF, cETLus



**Champion
UH230B
Dishwasher, Undercounter**

**Qty Available: 1
\$8,762.21 ea**

Dishwasher, undercounter, 24"W x 25"D x 33-3/4"H, high temperature sanitizing, with StemsSure™ soft start to protect glasses & dishes from chipping & breaking, (40) racks per hour capacity, 90 second cycle, top mounted controls with prime switch, 15-3/4"H door opening, door safety switch, advanced digital thermometer monitoring, stainless steel top & side panels, quiet double-wall construction, detergent & rinse aid pumps, automatic drain cycle, pumped drain, built-in electric booster for 180°F final rinse water (standard 70°F/39°C rise), rinse sentry – extends the cycle time to ensure 180°F final rinse, low-water tank heat protection, automatic tank fill, (1) peg rack, (1) flat rack, 1 HP wash pump motor, Water pressure regulating valve (unmounted), Shear Energy – a reduction in energy requirements while maximizing performance, Multi-Power – includes: Multi-Volt & Multi-Phase (Allows for infield conversion to 208-240 volt and/or single to three phase with ease), NSF, cETLus, ENERGY STAR®



**Champion
UH330B
Dishwasher, Undercounter**

**Qty Available: 1
\$9,442.65 ea**

Dishwasher, undercounter, 24"W x 26-3/4"D x 33-3/4"H, high temperature sanitizing, with Heat Recovery Condensate Removal, Dry Assist & StemsSure™ soft start to protect glasses & dishes from chipping & breaking, (24) racks per hour capacity, 150 second cycle, top mounted precise digital temperature display & Vari-cycle controls, 14-3/4"H door opening, stainless steel top & side panels, insulated booster & panels, detergent & rinse aid pumps, automatic drain cycle, pumped drain, built-in electric booster for 180°F final rinse water (standard 70°F/39°C rise), rinse sentry – extends the cycle time to ensure 180°F final rinse, (1) peg rack, (1) flat rack, 1 HP wash pump motor, Multi-Power – includes: Multi-Volt & Multi-Phase (Allows for infield conversion to 208-240 volt and/or single to three phase with ease), NSF, cETLus, ENERGY STAR®



**Hobart
LXEC-3
Dishwasher, Undercounter**

**Qty Available: 1
\$9,028.32 ea**

Dishwasher, undercounter, 23-15/16"W x 25-9/16"D x 32-1/2"H, low temperature chemical sanitizing, 120v/60/1-ph, accommodates optional two-level racking accessory, (34) racks/hr, fresh water rinse, .74 gal/rack, delime notification, auto chemical priming, service diagnostics, detergent, rinse aid & sanitizer pumps., cULus, NSF, ENERGY STAR®



**Hobart
LXGER-1
Dishwasher, Undercounter**

**Qty Available: 1
\$9,679.32 ea**

(14" LEG STAND) Advansys™ Undercounter Dishwasher/Glasswasher with Energy Recovery, Hot Water Sanitation, .62 gal per rack, 30 or 24 Racks/Hour, Fresh Water Rinse, Steam Elimination, Auto Delime notification & cycle, Auto Chemical Priming, with detergent, rinse aid & delime pumps, 2 Programmable Cycles, Advanced Service Diagnostics, electric tank heat, 120/208-240(3W)/60/1, ENERGY STAR®, Free factory startup for installations within a 100 mile radius of a Hobart service office; installation beyond 100 miles will be charged at the quoted rate by the local Hobart service office



**Hobart
LXGEPR-1
Dishwasher, Undercounter**

**Qty Available: 1
\$8,779.68 ea**

(14" LEG STAND) Advansys™ Undercounter Dishwasher/Glasswasher with Puri Rinse, Cold Water Sanitation, 1.14 gal per rack, 38 or 29 Racks/Hour, Auto Delime notification & cycle, Auto Chemical Priming, with detergent, rinse aid, sanitizer & delime Pumps, 2 Programmable Cycles, Advanced Service Diagnostics, electric tank heat, 120/60/1, Free factory startup for installations within a 100 mile radius of a Hobart service office; installation beyond 100 miles will be charged at the quoted rate by the local Hobart service office



**Turbo Air
TIDC-26W-N
Display Case, Dipping Ice Cream**

**Qty Available: 1
\$5,807.82 ea**

Ice Cream Dipping Cabinet, 26"W x 26-1/8"D x 51"H, (4) 3 gallon tub capacity, (0) storage, (1) standard ABS night cover, (1) stainless steel shelf, LED lighting for interior canopy, manual defrost, PE coated removable magnetic frost shields, white exterior color, R290 Hydrocarbon refrigerant, 1/3 HP, 115v/60/1-ph, 1.9 amps, NEMA 5-15P, cETLus, ETL-Sanitization



Turbo Air
TIDC-47W-N
Display Case, Dipping Ice Cream

Qty Available: 1
\$8,476.44 ea

Ice Cream Dipping Cabinet, 47"W x 26-1/8"D x 50-7/8"H, (8) 3 gallon tub capacity, (4) storage, (2) standard ABS night covers, (2) stainless steel shelves, LED lighting for interior canopy, manual defrost, PE coated removable magnetic frost shields, white exterior color, R290 Hydrocarbon refrigerant, 1/2 HP, 115v/60/1-ph, 4.6 amps, NEMA 5-15P, cETLus, ETL-Sanitation



Turbo Air
TIDC-70W-N
Display Case, Dipping Ice Cream

Qty Available: 1
\$11,781.85 ea

Ice Cream Dipping Cabinet, 68"W x 26-1/8"D x 50-7/8"H, (12) 3 gallon tub capacity, (8) storage, (2) standard ABS night covers, (3) stainless steel shelves, LED lighting for interior canopy, manual defrost, PE coated removable magnetic frost shields, white exterior color, R290 Hydrocarbon refrigerant, 1 HP, 115v/60/1-ph, 6.7 amps, NEMA 5-15P, cETLus, ETL-Sanitation



Hatco
GRHW-1SGDS
Display Case, Hot Food, Countertop

Qty Available: 1
\$3,079.20 ea

Glo-Ray® Display Warmer, countertop unit with slanted heated hardcoated base & heated glass shelf, infrared top heat, buffet style sneeze guard, lighted rocker switch, 1330 watts, cULus, UL EPH Classified, Made in USA



Hatco
FSD-1-120-QS
Display Case, Hot Food, Countertop

Qty Available: 1
\$3,229.80 ea

(QUICK SHIP MODEL) Flav-R-Savor® holding & display cabinet, (1) door, (3) tier circle rack with motor, LED lighting, with 6 ft cord & plug, 1414 watts, 120v/60/1-ph, 11.8 amps, CE, cULus, UL EPH Classified, Made in USA



Hatco
FSDT-1X
Display Case, Hot Food, Countertop

Qty Available: 1
\$3,155.40 ea

Flav-R-Savor® holding & display cabinet, (1) door, (4) tier pan rack without motor, LED lighting, with 6 ft cord & plug, 1440 watts, CE, cULus, UL EPH Classified, Made in USA



Structural Concepts
CGS2830
Display Case, Non-Refrigerated Countertop

Qty Available: 1
\$4,188.35 ea

Impulse® Service/Self-Service Non-Refrigerated Display Case, countertop, 28-1/8"W, straight front glass & ends, (3) lighted metal shelves, top light, clear glass rear swinging doors, black interior & exterior, cETLus, ETL-Sanitation



Structural Concepts
HMG6353R
Display Case, Refrigerated Bakery

Qty Available: 1
\$17,049.69 ea

Harmony® Service Refrigerated Case, 62-5/8"W, Breeze with EnergyWise self-contained refrigeration system with evaporator pan, curved lift-up front glass, (3) lighted glass shelves, top light, sliding glass rear doors, black interior, black trim, (2) full end panels with mirror, cETLus, ETL-Sanitation



Turbo Air
TSSC-4
Display Case, Refrigerated Sushi

Qty Available: 1
\$3,476.42 ea

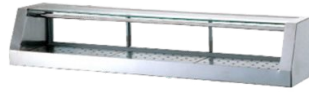
Sushi Display Case, 48"W, pre-piped for remote refrigeration, 304 stainless steel with mirror finish, removable tempered glass, rear doors, stainless steel removable shelves, water drain hole for easy cleaning, ANSI approved, NSF



**Turbo Air
TSSC-5
Display Case, Refrigerated Sushi**

Qty Available: 1
\$3,848.36 ea

Sushi Display Case, 60"W, pre-
piped for remote refrigeration,
304 stainless steel with mirror
finish, removable tempered
glass, rear doors, stainless
steel removable shelves, water
drain hole for easy cleaning,
ANSI approved, NSF



**Turbo Air
TSSC-6
Display Case, Refrigerated Sushi**

Qty Available: 1
\$4,207.38 ea

Sushi Display Case, 72"W, pre-
piped for remote refrigeration,
304 stainless steel with mirror
finish, removable tempered
glass, rear doors, stainless
steel removable shelves, water
drain hole for easy cleaning,
ANSI approved, NSF



**Salvajor
200
Disposer**

Qty Available: 1
\$2,366.98 ea

Disposer, basic unit only, 2 Hp
motor, heat treated aluminum
alloy housing, UL, CE



**Salvajor
300
Disposer**

Qty Available: 1
\$3,143.09 ea

Disposer, basic unit only, 3 Hp
motor, single support leg, heat
treated aluminum alloy
housing, UL, CE



**Salvajor
500
Disposer**

Qty Available: 1
\$4,302.29 ea

Disposer, basic unit only, 5 Hp
motor, single support leg, heat
treated aluminum alloy
housing, UL, CE



**Salvajor
150
Disposer**

Qty Available: 1
\$1,483.78 ea

Disposer, basic unit only, 1-1/2
Hp motor, heat treated
aluminum alloy housing, UL,
CSA, CE



**Salvajor
ARSS
Disposer Control Panel**

Qty Available: 1
\$2,740.80 ea

Start/stop push button,
drain/flush/time delay,
automatic reversing & water
saving control, NEMA 4
stainless steel enclosure



**Salvajor
MRSS-LD
Disposer Control Panel**

Qty Available: 1
\$1,058.40 ea

Start/Stop Push Button, manual
reversing control with safety
line disconnect, NEMA 4
stainless steel enclosure
(*Effective 6-1-17 all MRSS
control panel dimensions will
be 9-1/4" x 10-1/4" x 5-
7/16"**))



True Mfg. - General Foodservice
TDR48-RISZ1-L-B-SS-1
Draft Beer Cooler

Qty Available: 1
\$3,849.38 ea

Refrigerated Draft Bar Cooler, two-section, 48"W, side mounted self-contained refrigeration, stainless steel countertop, (2) solid hinged doors (locking), (1) 3" dia. insulated beer column with single faucet draft arm and 2-way manifold, (1) 15" surface mounted drip tray, LED interior lighting, black powder coated exterior, stainless steel interior sides & floor, R290 Hydrocarbon refrigerant, 1/5 HP, 115v/60/1-ph, 1.8 amps, NEMA 5-15P, cULus, UL EPH Classified, Made in USA



True Mfg. - General Foodservice
TDD-1-S-HC
Draft Beer Cooler

Qty Available: 1
\$3,494.84 ea

Draft Beer Cooler, 23-1/2"W, (1) 1/2 keg capacity, stainless steel counter top, (1) door with lock, (1) column type beer faucet, stainless steel exterior, galvanized interior with stainless steel floor, castors, R290 Hydrocarbon refrigerant, 1/10 HP 115v/60/1-ph, 1.4 amps, NEMA 5-15P, cULus, UL EPH Classified, Made in USA, ENERGY STAR®



True Mfg. - General Foodservice
TDD-2-HC
Draft Beer Cooler

Qty Available: 1
\$4,052.89 ea

Draft Beer Cooler, (2) 1/2 keg capacity, stainless steel counter top, (2) solid hinged doors with locks, LED interior light, (2) 3" dia. insulated beer columns with single faucet draft arm, black vinyl exterior, galvanized interior with stainless steel floor, R290 Hydrocarbon refrigerant, 1/4 HP, 115v/60/1-ph, 2.8 amps, NEMA 5-15P, cULus, UL EPH Classified, Made in USA, ENERGY STAR®



True Mfg. - General Foodservice
TDD-2-S-HC
Draft Beer Cooler

Qty Available: 1
\$5,427.55 ea

Draft Beer Cooler, (2) 1/2 keg capacity, stainless steel counter top, (2) solid hinged doors with locks, LED interior light, (2) 3" dia. insulated beer columns with single faucet draft arm, stainless steel exterior, galvanized interior with stainless steel floor, R290 Hydrocarbon refrigerant, 1/4 HP, 115v/60/1-ph, 2.8 amps, NEMA 5-15P, cULus, UL EPH Classified, Made in USA, ENERGY STAR®



True Mfg. - General Foodservice
TDD-3-HC
Draft Beer Cooler

Qty Available: 1
\$4,465.54 ea

Draft Beer Cooler, (3) 1/2 keg capacity, stainless steel counter top, (2) solid hinged doors with locks, LED interior light, (2) 3" dia. insulated beer columns with single faucet draft arm, black vinyl exterior, galvanized interior with stainless steel floor, R290 Hydrocarbon refrigerant, 1/4 HP 115v/60/1-ph, 2.8 amps, NEMA 5-15P, cULus, UL EPH Classified, Made in USA, ENERGY STAR®



True Mfg. - General Foodservice
TDD-3-S-HC
Draft Beer Cooler

Qty Available: 1
\$6,364.53 ea

Draft Beer Cooler, (3) 1/2 keg capacity, stainless steel counter top, (2) solid hinged doors with locks, LED interior light, (2) 3" dia. insulated beer columns with single faucet draft arm, stainless steel exterior, galvanized interior with stainless steel floor, R290 Hydrocarbon refrigerant, 1/4 HP 115v/60/1-ph, 2.8 amps, NEMA 5-15P, cULus, UL EPH Classified, Made in USA, ENERGY STAR®



Beverage Air
BM23HC-B
Draft Beer Cooler

Qty Available: 1
\$1,969.69 ea

Draft Beer Cooler, portable, 24"W, 7.66 cu. ft., door type, self-closing door with locks, self-contained refrigeration, one-keg capacity, 3" insulated tower with single faucet, black exterior, stainless steel top, galvanized interior, stainless steel floor, 4" casters, R290 Hydrocarbon refrigerant, 1/6 HP, cULus, UL EPH Classified, UL-Sanitation, Made in USA



Pitco Frialator (Middleby)
SE14R
Electric Floor Fryer

Qty Available: 1
\$8,885.70 ea

Solstice™ Fryer, electric, floor model, full frypot, 40 - 50 lb. oil capacity, solid state controls, melt cycle, boil out capacity, drain valve interlock switch, stainless steel tank, front & sides, 22.0kW, ENERGY STAR®, cULus, NSF, CE, GS



Hobart
84145-1
Electric Food Cutter

Qty Available: 1
\$11,043.48 ea

Food Cutter with #12 attachment hub, 14" diameter stainless steel bowl 22 RPM, double stainless steel knives 1725 RPM, bowl cover with safety interlock, push/pull on/off switch, one-piece burnished aluminum housing, 3" legs, 115v/60/1-ph, 1/2 HP



Hobart
84186-1
Electric Food Cutter

Qty Available: 1
\$14,982.24 ea

Food Cutter with #12 attachment hub, 18" diameter stainless steel bowl 20 RPM, double stainless steel knives 1725 RPM, bowl cover with safety interlock, push/pull on/off switch, one-piece burnished aluminum housing, 3" legs, 115v/60/1-ph, 1 HP, 6' cord with plug



Kube Systems
KUBE 5
Electronics

Qty Available: 1
\$1,004.40 ea

Multi device charging solution Includes (5) portable charging units (1) recharging tray Includes (3) built-in connections & (2) USB ports



Winholt Equipment
EC1840-CTL
Enclosed Mobile Cabinet Extra Heavy Duty

Qty Available: 1
\$814.54 ea

Enclosed Transport Cabinet, heavy duty, 21"W x 27"D x 68"H, reinforced aluminum construction with reinforced undercarriage, non-insulated, accommodates (40) 18" x 26" pans, double pan construction with reinforced braces, 1-1/2" runner spacing, solid door with reinforced hinges, 5" swivel plate casters with polyurethane tread, NSF



Star (Middleby)
STAND/HC-36
Equipment Stand, for Countertop Cooking

Qty Available: 1
\$1,686.23 ea

Ultra-Max® 36" Stand, with casters, stainless steel construction, rated for 400 lbs. [181kg]

Star (Middleby)
STAND/HC-48
Equipment Stand, for Countertop Cooking

Qty Available: 1
\$1,980.69 ea

Ultra-Max® 48" Stand, with casters, stainless steel construction, rated for 500 lbs. [226kg]

Star (Middleby)
STAND/HC-60
Equipment Stand, for Countertop Cooking

Qty Available: 1
\$2,314.66 ea

Ultra-Max® 60" Stand, with casters, stainless steel construction, rated for 600 lbs. [272kg]

Star (Middleby)
STAND/HC-72
Equipment Stand, for Countertop Cooking

Qty Available: 1
\$2,738.39 ea

Ultra-Max® 72" Stand, with casters, stainless steel construction, rated for 700 lbs. [317kg]

**Berkel
300M-STANDC
Equipment Stand, for Mixer /
Slicer**

300M Slicer Stand with Casters,
classic Berkel red



**Qty Available: 1
\$4,294.92 ea**

**Rancilio Group North America
EGRO ONE-PURE COFFEE
Espresso Cappuccino Machine**

Egro ONE Pure Coffee Espresso
Machine, staff operated, super-
automatic, 5.7" color touchscreen
user interface for up to 48 drink
selections, iSteam intelligent steam
wand, two-piece drink outlet, (2)
grinders & hoppers, automatic daily
cleaning, centralized hot water,
Americano bypass single cup, USB
port, ABS & stainless steel
construction



**Qty Available: 1
\$16,800.00 ea**

**Rancilio Group North America
EGRO ONE-TOP MILK XP
Espresso Cappuccino Machine**

Egro ONE Top Milk XP, staff/self-service,
super-automatic, 5.7" color touchscreen
user interface, for up to 48 drink selections,
(2) automatic foamer heads, includes milks
pumps (for one type of milk), up to 250 milk
drinks per hour, two-piece drink outlet, (2)
grinders & hoppers, one-step cleaning,
centralized hot water, Americano bypass
single cup, USB port, ABS & stainless steel
construction, CE, cETLus, ETL-Sanitation
(CHOICE OF FRIDGE IS REQUIRED)



**Qty Available: 1
\$19,572.00 ea**

**Rancilio Group North America
EGRO ZERO+ PURE COFFEE
Espresso Cappuccino Machine**

Egro ZERO+ Pure Coffee Espresso Machine,
staff operated, super-automatic, 18 grams
brewing group, 8 button backlit keypad user
interface for up to 16 drink selections, (2)
grinders & hoppers, centralized hot water,
Americano bypass single cup, volumetric
pump enables extra large drinks, (1) manual
steam wand, LED illuminated work area,
100 cups per day, painted steel & ABS
construction



**Qty Available: 1
\$10,668.00 ea**

**Rancilio Group North America
EGRO ZERO+ QUICK MILK
Espresso Cappuccino Machine**

Egro ZERO+ Quick Milk, staff/self-service,
super-automatic, 18 grams brewing group,
8 button backlit keypad user interface for up
to 16 drink selections, (2) grinders &
hoppers, centralized hot water, Americano
bypass single cup, volumetric pump enables
extra large drinks, LED illuminated work
area, push-button automatic milk frothing &
delivery via countertop Quick Milk fridge (1
gallon/0.3 cu. ft. capacity), 100 cups per
day, painted steel & ABS construction



**Qty Available: 1
\$12,264.00 ea**

**Pitco Frialator (Middleby)
D9109105
Fat Vat**

Fat Vat, safe oil transport
system holds 40 lb. (5.3
gallons)



**Qty Available: 1
\$1,001.70 ea**

**Maywood Furniture
DPORIG60RD
Folding Table**

Original Folding Table, round
top, 5/8" plywood top (edge to
be specified), black powder
coated chassis, 60" dia., 30"
high, metal glide caps std.



**Qty Available: 1
\$401.22 ea**

**Maywood Furniture
DPORIG54RD
Folding Table**

Original Folding Table, round
top, 5/8" plywood top (edge to
be specified), black powder
coated chassis, 54" dia., 30"
high, metal glide caps std.



**Qty Available: 1
\$378.07 ea**

**Maywood Furniture
DPORIG72RD
Folding Table**

**Qty Available: 1
\$524.67 ea**

Original Folding Table, round top, 5/8" plywood top (edge to be specified), black powder coated chassis, 72" dia., 30" high, metal glide caps std.



**Maywood Furniture
DPORIG3048
Folding Table**

**Qty Available: 1
\$274.77 ea**

Original Folding Table, rectangular top, 3/8" plywood top with aluminum flush edge, black powder coated chassis, 48" long, 30" wide, 30" high, metal glide caps std.



**Maywood Furniture
DPORIG3072
Folding Table**

**Qty Available: 1
\$303.06 ea**

Original Folding Table, rectangular top, 3/8" plywood top with aluminum flush edge, black powder coated chassis, 72" long, 30" wide, 30" high, metal glide caps std.



**Berkel
250-STD
Food Packaging Machine**

**Qty Available: 1
\$10,421.04 ea**

Vacuum Packaging Machine, table model, single stainless steel chamber, size 14" x 15" x 4", 12-1/2" seal bar, 6cmh Busch pump, with double seal, 6' cord & plug, 1/2 HP, 115v/60/1-ph, 6.5 amps, cETLus, ETL-Sanitation



**Berkel
350-STD
Food Packaging Machine**

**Qty Available: 1
\$13,402.20 ea**

Vacuum Packaging Machine, table model, single stainless steel chamber, size 20" x 18" x 6.8", 19" seal bar, 21cmh Busch pump, with electric cut-off & gas flush, 6' cord & plug, 1-1/4 HP, 115v/60/1-ph, 14.2 amps, cETLus, ETL-Sanitation



**Wells (Middleby)
SW-10T
Food Pan Warmer, Countertop**

**Qty Available: 1
\$396.55 ea**

Food Warmer, countertop, electric, 11 quart round pan, wet/dry operation, thermostatic controls, stainless steel construction, 120v/60/1-ph, 0.83kW, 6.9 amps, NEMA 5-15P, UL



**APW Wyatt (Middleby)
RCW-7SP
Food Pan Warmer/Cooker,
Countertop**

**Qty Available: 1
\$421.20 ea**

(MIDDLEBY ESSENTIALS ITEM)
Food Pan Cooker/Warmer, electric, countertop, round, 7 quart capacity, wet & dry operation, thermostatic controls, includes: 7 quart inset, ladle & cover, stainless steel well & housing, 120v/60/1-ph, 1000w, 8.3 amps, NEMA 5-15P, cULuc, CE [service class A-2 business day lead time]



**Hobart
FP100-1
Food Processor, Benchtop /
Countertop**

**Qty Available: 1
\$3,830.40 ea**

Food Processor - Unit Only, angled continuous feed design, half-size hopper, 11 lb per/min production cap., 420 rpm, stainless steel cutting surfaces, planetary gear transmission, triple safety interlocks, aluminum housing, rubber feet, 120/60/1, 1/3 HP, 3.5 amps, UL, NSF



**Hobart
FP250-1
Food Processor, Benchtop /
Countertop**

Food Processor - Unit Only, angled continuous feed design, full-size hopper, 17 lb per/min production capacity, 420 rpm, stainless steel cutting surfaces, planetary gear transmission, triple safety interlocks, aluminum housing, rubber feet, 120/60/1, 3/4 HP, 8.0 amps, UL, NSF

Qty Available: 1
\$7,113.96 ea



**Robot Coupe
R301U
Food Processor, Benchtop /
Countertop**

D Series Combination Food Processor, 3.7 liter stainless steel bowl with handle, continuous feed kit with kidney shaped & cylindrical shaped hoppers, includes: (1) "S" blade (27286), (1) 2mm grating disc (27577), (1) 4mm slicing disc (27566), on/off & pulse switch, single speed, 1725 RPM, 120v/60/1-ph, 9.0 amps, 1-1/2 HP, NEMA 5-15P, cETLus, ETL-Sanitation

Qty Available: 1
\$1,948.72 ea



**Robot Coupe
R2U
Food Processor, Benchtop /
Countertop**

Commercial Food Processor, 3 liter stainless steel bowl with handle, vegetable prep attachment with external ejection, kidney-shaped opening, includes: (1) "S" blade (27055), (1) 2mm grating disc (27577), (1) 4mm slicing disc (27566), continuous feed, bowl attachment designed for vertical cutting & mixing, on/off & pulse switch, single speed, 1725 RPM, 120v/60/1-ph, 7.0 amps, 1 HP, NEMA 5-15P, cETLus, ETL-Sanitation

Qty Available: 1
\$1,598.39 ea



**Hobart
FP350-1
Food Processor, Benchtop /
Countertop**

Food Processor - Unit Only, angled continuous feed design, full-size hopper, 26 lb per/min production cap., 430 rpm, stainless steel cutting surfaces, planetary gear transmission, triple safety interlocks, aluminum housing, rubber feet, 120/60/1, 1 HP, 10 amps, UL, NSF

Qty Available: 1
\$9,637.32 ea



**Hobart
HS8-1
Food Slicer, Electric**

Heavy Duty Meat Slicer, manual, 13" CleanCut™ removable knife with removal tool, anodized finish with (6) interlocks, removable meat grip assembly, removable ring guard cover, single action top mounted sharpener with Borazon™ stones, cleaning kickstand, 1/2 hp motor, 5.4amps, 120v/60hz/1-ph NSF cETLus

Qty Available: 1
\$10,103.52 ea



**Hobart
HS9-1
Food Slicer, Electric**

Heavy Duty Meat Slicer, automatic, 13" CleanCut™ removable knife with removal tool, anodized finish with (6) interlocks, (3) stroke lengths & (4) stroke speeds, removable meat grip assembly, removable ring guard cover, product fence, single action top mounted sharpener with Borazon™ stones, manual lift lever, 1/2 hp motor, 120v/60hz/1-ph NSF cETLus

Qty Available: 1
\$14,775.60 ea



**Hobart
EDGE12-11
Food Slicer, Electric**

Centerline by Hobart Edge Series Slicer, manual, med duty, angle feed, 12" carbon steel knife, no volt release, poly-v belt drive, permanent ring guard, removable anodized aluminum carriage & knife cover, top mounted sharpener, anodized aluminum finish, 120v/60/1-ph, 4 amp, 1/2 hp, cETLus, NSF (NET)

Qty Available: 1
\$2,061.60 ea



**True Mfg. - General Foodservice
GDM-49F-HC~TSL01
Freezer Merchandiser**

Freezer Merchandiser, two-section, True standard look version 01, -10°F, (8) shelves, (2) triple-pane thermal glass hinged door, LED interior lights, powder coated steel exterior, white interior with stainless steel floor, R290 Hydrocarbon refrigerant, All Units Manufactured Before April 4th, 2021 are pre-wired at the factory and is ready for final connection to a single 115/208-230/60Hz single phase, NEMA 14-20R dedicated outlet. All Units Manufactured After April 4th, 2021 are pre-wired at the factory and is ready for final connection to a single 115/60Hz single phase, NEMA 5-20R dedicated outlet. ***Please contact the factory to verify your unit's electrical specifications***, cULus, UL EPH Classified, Made in USA, ENERGY STAR®

Qty Available: 1
\$9,069.96 ea



**True Mfg. - General Foodservice
GDM-26F-HC~TSL01
Freezer Merchandiser**

**Qty Available: 1
\$5,925.05 ea**

Freezer Merchandiser, one-section, True standard look version 01, -10°F, (4) shelves, (1) triple-pane thermal glass hinged door, LED interior lights, powder coated steel exterior, white interior with stainless steel floor, R290 Hydrocarbon refrigerant, 1 HP, 115v/60/1-ph, 9.5 amps, NEMA 5-15P, cULus, UL EPH Classified, Made in USA



**Atlas Metal
WF-3
Frost Top / Cold Slab, Drop In**

**Qty Available: 1
\$5,241.85 ea**

Frost Top Drop-In Unit, self-contained refrigeration, 39"W x 19-1/2"D frost top, 14/304 stainless steel, with on/off switch & pilot light, 18 gauge galvanized steel outer case, 41-3/4" x 22-1/4" cutout required, UL, NSF



**BUNN
34000.0012
Frozen Drink Machine, Non-Carbonated, Bowl Type**

**Qty Available: 1
\$2,200.41 ea**

34000.0012 ULTRA-2 Ultra Gourmet Ice® Frozen Drink Machine, counter model, (2) 3 gallon hoppers, internally monitored refrigeration system, touchpad display, reversing auger design freeze time & reduces air mixing, flat lid, stainless steel & white decor, cord attached, 120v/60/1-ph, 12amps, NEMA 5-15P, NSF, ETL



**BUNN
34000.0080
Frozen Drink Machine, Non-Carbonated, Bowl Type**

**Qty Available: 1
\$2,252.28 ea**

34000.0080 ULTRA-2 High Performance Ultra Gourmet Ice® Frozen Drink Machine, counter model, (2) 3 gallon hoppers, internally monitored refrigeration system, touchpad display, reversing auger design freeze time & reduces air mixing, black decor, cord attached, 120v/60/1-ph, 12amps, NEMA 5-15P, NSF, ETL



**Pitco Frialator (Middleby)
SE14RS-1FD
Fryer Battery, Electric**

**Qty Available: 1
\$18,942.75 ea**

Solstice™ Prepackaged Fryer System with Solstice™ Solo Filter System, High Power, electric, (1) 40-50 lb. oil capacity full tank, solid state controls, boil out, drain valve interlock, melt cycle, stainless steel tank, front & sides, under-fryer drawer filtration, 22.0kW (-F), ENERGY STAR®, cULus, NSF, CE, GS



**Pitco Frialator (Middleby)
SG14RS-1FD
Fryer Battery, Gas**

**Qty Available: 1
\$18,004.95 ea**

Solstice™ Prepackaged Fryer System with Solstice™ Solo Filter System, High Power, gas, (1) 40-50 lb. oil capacity full tank, millivolt control, stainless steel tank, front & sides, under-fryer drawer filtration, 10" adjustable legs, 122,000 BTU (-F), NSF, CE, CSA Flame, CSA Star, AuGA



**Pitco Frialator (Middleby)
SG14RS-2FD
Fryer Battery, Gas**

**Qty Available: 1
\$26,909.10 ea**

Solstice™ Prepackaged Fryer System with Solstice™ Filter Drawer System, High Power, gas, (2) 50 lb. oil capacity full tanks, millivolt control, stainless steel tank, front & sides, under-fryer drawer filtration, total 244,000 BTU (-FF), NSF, CE, CSA Flame, CSA Star, AuGA



**Pitco Frialator (Middleby)
RP14
Fryer Filter, Mobile**

**Qty Available: 1
\$4,606.65 ea**

Fryer Filter, mobile, 55 lb. oil capacity, 18 gauge stainless steel lift-cover, low-profile design, with pump & hose assembly, stainless steel, for use with all 14 size fryers, reversible pump, CSA Flame, CSA Star, NSF, UL, CE



**Innovative Hospitality Concepts
INN302GD-FRAMELESS
GUESTROOM REFRIGERATOR**

**Qty Available: 1
\$224.90 ea**

Frameless Glass door 30 liter capacity refrigerator Glass shelves with chrome trim Black exterior finish and black interior finish Internal Light Dimension: 19.7"H x 15.8"W x 16.5"D Per standard specs



**Pitco Frialator (Middleby)
SG14R-S
Gas Floor Fryer**

**Qty Available: 1
\$7,494.30 ea**

(QUICK SHIP) (MIDDLEBY ESSENTIALS ITEM) Essentials Fryer, Solstice™ Fryer, gas, floor model, full frypot, 40-50 lb. oil capacity, millivolt control ONLY, includes drain line cleanout rod & drain extension, stainless steel tank, front, door & sides, 122,000 BTU, NSF, CE, CSA Flame, CSA Star, AuGA (free standing, stand alone only fryer - special price) (Cannot be configured for use with other controllers, accessories or options) (Ships within 1-2 days)



**Pitco Frialator (Middleby)
SG14-S
Gas Floor Fryer**

**Qty Available: 1
\$5,950.35 ea**

(QUICK SHIP) (MIDDLEBY ESSENTIALS ITEM) Essentials Fryer, Solstice™ Fryer, gas, floor model, full frypot, 40-50 lb. oil capacity, millivolt control ONLY, includes drain line cleanout rod & drain extension, stainless steel tank, front, door & sides, 110,000 BTU, NSF, CE, CSA Flame, CSA Star, AuGA (free standing, stand alone only fryer - special price) (Cannot be configured for use with other controllers, accessories or options) (Ships within 1-2 days)



**Bar Maid/Glass Pro
GP-100
Glass Polisher**

**Qty Available: 1
\$1,447.78 ea**

Bar Maid® Glass Polisher, (350) glass capacity per hour, warm air blower tube, (5) removable microfiber twine polishing heads, built in handles, 1.35kW, 110v/60/1-ph, cETLus



**Beverage Air
GF24HC-B
Glass and Plate Chiller**

**Qty Available: 1
\$2,366.67 ea**

Glass Froster, underbar model, 24-1/8"W, 33-1/2"H, 4.0 cu. ft., top opening with (1) sliding door lid, (2) shelves & bottom rack, (2) shelf ledges with (3) mounting points, adaptive defrost, 0° F operating temperature, stainless top, black painted steel exterior, galvanized steel interior, self-contained refrigeration, 1/2 HP, cULus, UL EPH Classified, UL-Sanitation, Made in USA



**Beverage Air
GF34HC-B
Glass and Plate Chiller**

**Qty Available: 1
\$2,653.06 ea**

Glass Froster, underbar model, 34"W, 33-5/8"H, 6.4 cu. ft., top opening with (1) sliding door lid, (2) shelves & bottom rack, (2) shelf ledges with (3) mounting points, adaptive defrost, 0° F operating temperature, stainless top, black painted steel exterior, galvanized steel interior, self-contained refrigeration, 1/2 HP, cULus, UL EPH Classified, UL-Sanitation, Made in USA



**Beverage Air
GF48HC-B
Glass and Plate Chiller**

**Qty Available: 1
\$2,837.30 ea**

Glass Froster, underbar model, 48"W, 33-5/8"H, 9.65 cu. ft., top opening with (2) sliding door lids, (4) shelves, (2) bottom racks, (2) shelf ledges with (3) mounting points, adaptive defrost, 0° F operating temperature, stainless top, black painted steel exterior, galvanized steel interior, self-contained refrigeration, 1/2 HP, cULus, UL EPH Classified, UL-Sanitation, Made in USA



**Bar Maid/Glass Pro
A-200
Glasswasher, Brush Type**

**Qty Available: 1
\$489.57 ea**

Bar Maid® Glass Washer, upright, electric, 1/3 HP, (5) brushes ((4) 6" & (1) 7-1/2"), continuous run, enclosed motor with sealed lower bearings & splashguard canopy, stainless steel construction, 115v/60/1-ph, includes: GFI plug, ETLus, Two year warranty with registration Made in USA



**Champion
CG
Glasswasher, Undercounter /
Underbar**

**Qty Available: 1
\$8,980.06 ea**

Glasswasher, underbar type, low temperature chemical sanitizing, rotary conveyor design, 25-1/4" cabinet, clockwise rotation, stainless steel construction, access door on front, approx 1000 2-1/2" glasses/hr



**Champion
CG4
Glasswasher, Undercounter /
Underbar**

**Qty Available: 1
\$15,918.63 ea**

Glasswasher, straight conveyor, underbar type, low temperature chemical sanitizing, polypropylene conveyor with glass activated on/off stop, 48" cabinet, specify left-to-right or right-to-left, stainless steel construction, approx 2000 2-1/2" glasses/hr



**Vulcan
RRE36E
Griddle, Electric, Countertop**

**Qty Available: 1
\$10,419.05 ea**

Rapid Recovery™ Heavy Duty Griddle, electric, countertop, 36" W x 24" D cooking surface, 3/4" thick composite griddle plate with stainless steel cooking surface, bottom mounted snap action thermostat every 12", stainless steel front, sides, front top ledge, front grease trough, 4" back & tapered side splashes, 4" adjustable legs, cCSAus, NSF



**Vulcan
RRE48E
Griddle, Electric, Countertop**

**Qty Available: 1
\$12,322.20 ea**

Rapid Recovery™ Heavy Duty Griddle, electric, countertop, 48" W x 24" D cooking surface, 3/4" thick composite griddle plate with stainless steel cooking surface, bottom mounted snap action thermostat every 12", stainless steel front, sides, front top ledge, front grease trough, 4" back & tapered side splashes, 4" adjustable legs, cCSAus, NSF



**Vulcan
936RX
Griddle, Gas, Countertop**

**Qty Available: 1
\$10,090.90 ea**

Heavy Duty Griddle, countertop, gas, 36" W x 24" D cooking surface, 1" thick polished steel griddle plate, embedded mechanical snap action thermostat every 12", millivolt pilot safety, electric spark or manual ignition, front manifold gas shut-off valve, low profile, stainless steel front, sides, front grease trough, 4" back & tapered side splashes, 4" adjustable legs, 81,000 BTU, CSA, NSF



**Vulcan
948RX
Griddle, Gas, Countertop**

**Qty Available: 1
\$11,682.23 ea**

Heavy Duty Griddle, countertop, gas, 48"W x 24"D cooking surface, 1" thick polished steel griddle plate, embedded mechanical snap action thermostat every 12", millivolt pilot safety, electric spark or manual ignition, front manifold gas shut-off valve, countertop, low profile, stainless steel front, sides, front top ledge with "Cool Bullnose", front grease trough, grease can, heavy gauge 4" back & tapered side splashes, 4" adjustable legs, 108,000 BTU, CSA, NSF



**Vulcan
960RX
Griddle, Gas, Countertop**

**Qty Available: 1
\$13,672.71 ea**

Heavy Duty Griddle, countertop, gas, 60" W x 24" D cooking surface, 1" thick polished steel griddle plate, embedded mechanical snap action thermostat every 12", millivolt pilot safety, electric spark or manual ignition, front manifold gas shut-off valve, low profile, stainless steel front, sides, front grease trough, 4" back & tapered side splashes, 4" adjustable legs, 135,000 BTU, CSA, NSF



**Vulcan
972RX
Griddle, Gas, Countertop**

**Qty Available: 1
\$15,477.07 ea**

Heavy Duty Griddle, countertop, gas, 72" W x 24" D cooking surface, 1" thick polished steel griddle plate, embedded mechanical snap action thermostat every 12", millivolt pilot safety, electric spark or manual ignition, front manifold gas shut-off valve, low profile, stainless steel front, sides, front grease trough, 4" back & tapered side splashes, 4" adjustable legs, 162,000 BTU, CSA, NSF



Absocold
ARD104AB21R/L
Guestroom Refrigerator

Qty Available: 1
\$254.80 ea

1.1 CF SINGLE DOOR - AUTO - DEFROST FINISH; BLACK



Danby
DAR023C1BDB
Guestroom Refrigerator

Qty Available: 1
\$152.40 ea

Compact all refrigerator 2.3 cu. ft. capacity Auto Defrost Exterior Finish: Black Dimension: 18-11/16" W x 17-10-16"D x 25-1/16"H



Vulcan
V4B36
HD Range, 36", 4 Open Burners

Qty Available: 1
\$7,429.13 ea

V Series Heavy Duty Range, gas, 36", modular, (4) 35,000 BTU open burners, cast iron grates, stainless steel front, front top ledge, sides, base, burner box & stub back, 4" flanged feet, 140,000 BTU, CSA, NSF



Vulcan
V4B36C
HD Range, 36", 4 Open Burners

Qty Available: 1
\$16,845.22 ea

V Series Heavy Duty Range, gas, 36", (4) 35,000 BTU open burners, cast iron grates, convection oven, stainless steel front, front top ledge, sides, base, burner box & stub back, 172,000 BTU, 6" adjustable legs, CSA, NSF



Vulcan
V6B36S
HD Range, 36", 6 Open Burners

Qty Available: 1
\$12,452.31 ea

V Series Heavy Duty Range, gas, 36", (6) 35,000 BTU open burners, cast iron grates, standard oven, stainless steel front, front top ledge, sides, base, burner box & stub back, 6" adjustable legs, 260,000 BTU, CSA, NSF



Vulcan
V6B36C
HD Range, 36", 6 Open Burners

Qty Available: 1
\$16,845.22 ea

V Series Heavy Duty Range, gas, 36", (6) 35,000 BTU open burners, cast iron grates, convection oven, stainless steel front, front top ledge, sides, base, burner box & stub back, 6" adjustable legs, 242,000 BTU, CSA, NSF



Vulcan
VGMT36S
HD Range, 36", Thermostatic Griddle

Qty Available: 1
\$14,254.46 ea

V Series Heavy Duty Range, gas, 36", griddle, 3/4" thick polished steel plate, snap action thermostatic controls, standard oven, stainless steel front, top front ledge, sides, base, burner box & stub back, 6" adjustable legs, 140,000 BTU, CSA Flame, CSA Star, NSF



Vulcan
VGMT36S
HD Range, 36", Thermostatic Griddle

Qty Available: 1
\$14,254.46 ea

V Series Heavy Duty Range, gas, 36", griddle, 3/4" thick polished steel plate, snap action thermostatic controls, standard oven, stainless steel front, top front ledge, sides, base, burner box & stub back, 6" adjustable legs, 140,000 BTU, CSA Flame, CSA Star, NSF



**Vulcan
VGMT36C
HD Range, 36", Thermostatic
Griddle**

**Qty Available: 1
\$20,006.70 ea**

V Series Heavy Duty Range, gas, 36", griddle, 3/4" thick polished steel plate, snap action thermostatic controls, convection oven, stainless steel front, top front ledge, sides, base, burner box & stub back, 6" adjustable legs, 122,000 BTU, CSA Flame, CSA Star, NSF



**Elkay Foodservice Products
EHS-18X
Hand Sink**

**Qty Available: 1
\$214.80 ea**

Economy Hand Sink, wall mount, 18"L x 14-1/2"W x 11"H, 5" deep, 6"H backsplash, 18 gauge stainless steel top & bowl, includes gooseneck faucet, Z-clip mounting bracket & 1-1/2" basket strainer (NET PRICE - No additional discount available)



**Lakeside Manufacturing
9600
Handwashing System**

**Qty Available: 1
\$4,907.87 ea**

Hand Washing Station, mobile, cold water faucet, 5-gallon fresh water capacity, 7-gallon waste water capacity, 10" x 12" x 5" sink bowl, chrome plated brass heavy duty faucet with on/off wrist blade controls, chrome plated soap dispenser, stainless steel sink & cabinet, locking door latch, 5" No-Mark® casters ((2) swivel with brakes, (2) fixed), corner bumpers, 10' cord, NEMA L5-15P, (water pump 115V/60/1-ph, .09amps), Made in USA



**Lakeside Manufacturing
9610
Handwashing System**

**Qty Available: 1
\$7,233.81 ea**

Deluxe Hand Washing Station, mobile, warm & cold water faucet, 2-1/2-gallon hot water heater, 10-gallon fresh water capacity, 14-gallon waste water capacity, 10" x 12" x 5" sink bowl, chrome plated brass heavy duty faucet with on/off wrist blade controls, chrome plated soap dispenser, stainless steel sink & cabinet, locking door latch, 5" No-Mark® ((2) swivel with brakes, (2) fixed), cord, NEMA L5-15P, (water heater 120V/60/1-ph, 13.4 amps, 1500 watts), (water pump 115V/60/1-ph, .09 amps), Made in USA



**Lakeside Manufacturing
9620
Handwashing System**

**Qty Available: 1
\$4,659.07 ea**

Hand Washing Station, mobile, warm water faucet, 5-gallon fresh water capacity, 7-gallon waste water capacity, 10" x 12" x 5" sink bowl, chrome plated brass heavy duty faucet with on/off wrist blade controls, chrome plated soap dispenser, stainless steel sink & cabinet, locking door latch, 5" casters ((2) swivel with brakes, (2) fixed), corner bumpers, 120V/60/1-ph, 2000 watts, 20amps, 10' cord & NEMA L5-20P, Made in USA



**Carter-Hoffmann (Middleby)
BB120
Heated Banquet Cart**

**Qty Available: 1
\$6,237.58 ea**

(MIDDLEBY ESSENTIALS ITEM)
Classic Carter™ Banquet Cabinet, mobile, insulated, single door for pre-plated food, (144) covered plates up to 10.5" diameter, thermostatically controlled heat unit, without plate carriers, stainless steel construction, cUL, UL EPH (RapidShip)



**Carter-Hoffmann (Middleby)
BB700
Heated Banquet Cart**

**Qty Available: 1
\$8,151.95 ea**

EquaHeat™ Banquet Cabinet, mobile, insulated, single door for pre-plated food, electric or canned heat, (60) covered 8-3/4" to 11" plates, stainless steel construction, 6" casters (2 swivel, 2 rigid), cUL, UL EPH



**Carter-Hoffmann (Middleby)
BB1300
Heated Banquet Cart**

**Qty Available: 1
\$10,210.48 ea**

EquaHeat™ Banquet Cabinet, mobile, insulated, double door for pre-plated food, electric or canned heat, (120) covered 8-3/4" to 11" diameter plates, stainless steel construction, 6" casters (2 swivel, 2 rigid), cUL, UL EPH



**Carter-Hoffmann (Middleby)
BB1600
Heated Banquet Cart**

Qty Available: 1
\$10,789.07 ea

(MIDDLEBY ESSENTIALS ITEM)
EquaHeat™ Banquet Cabinet, mobile, insulated, double door for pre-plated food, electric or canned heat, (150) covered 8-3/4" to 11" diameter plates, stainless steel construction, 6" casters (2 swivel, 2 rigid), cUL, UL EPH (RapidShip)



**Carter-Hoffmann (Middleby)
BB96
Heated Banquet Cart**

Qty Available: 1
\$5,437.58 ea

(MIDDLEBY ESSENTIALS ITEM)
Classic Carter™ Banquet Cabinet, mobile, insulated, single door for pre-plated food, (120) covered plates up to 10.5" diameter, thermostatically controlled heat unit, without plate carriers, stainless steel construction, cUL, UL EPH



**Carter-Hoffmann (Middleby)
BB150
Heated Banquet Cart**

Qty Available: 1
\$6,735.48 ea

(MIDDLEBY ESSENTIALS ITEM)
Classic Carter™ Banquet Cabinet, mobile, insulated, single door for pre-plated food, (180) up to 10.5" diameter, thermostatically controlled heat unit, without plate carriers, stainless steel construction, cUL, UL EPH (RapidShip)



**Carter-Hoffmann (Middleby)
CD252H
Heated Dish Cart**

Qty Available: 1
\$4,345.84 ea

Heated Dish Storage Cart, rotary design, enclosed type, dish dividers for (252) 11" max diameter plates, stainless steel base & dividers, 5" casters



**Carter-Hoffmann (Middleby)
CD260H
Heated Dish Cart**

Qty Available: 1
\$5,039.06 ea

Heated Dish Storage Cart, rotary design, enclosed type, dish dividers for (252) 12" max diameter plates, stainless steel base & dividers, 5" casters, cUL, NSF



**Metro
C537-CFC-4
Heated Holding Proofing Cabinet, Mobile**

Qty Available: 1
\$3,199.56 ea

C5™ 3 Series Heated Holding & Proofing Cabinet, with Red Insulation Armour™, mobile, 3/4 height, insulated, clear polycarbonate door, removable bottom mount control module, thermostat to 200°F, fixed wire slides on 3" centers (14) 18" x 26" or (26) 12" x 20" x 2 1/2" pan capacity, 5" casters (2 with brakes), aluminum, 120v/60/1 ph, 2000 watts, 16.7 amps, NEMA 5 20P, cULus, NSF



**Carter-Hoffmann (Middleby)
GC41
Herb & Microgreen Growing Cabinet**

Qty Available: 1
\$15,085.70 ea

Gardenchef™ Herb & Microgreen Growing Cabinet, automated growing system for lights, watering, monitoring pH & TDS levels, single door cabinet with (4) separate growing zones, touchscreen digital controls, 3/8" NPT drain & fill connections, stainless steel construction, 3" swivel casters (2 with brakes), 120v/60/1-ph, 4.4 amps, NEMA 5-15P, NSF, cULus, CE, Made in USA



**Spring USA
HC380-CT
Hot / Cold Server**

Qty Available: 1
\$2,615.22 ea

Solstice Hot/Cold Server, 8 qt., 24"W x 18-9/10"D x 11-2/5"H, 27"H with oven cover, rectangular, includes: full size cast aluminum insert pan, easy view tempered glass hinged cover & electronic control panel, stainless steel titanium housing, temperature range: 23°F to 50°F & 120°F to 185°F, 110-120v/60/1-ph, 230 watts, 1.9 amps, NEMA 5-15P, ETL, UL, CSA, NSF (Stock Item)



Star (Middleby)
175CBA
Hot Dog Broiler / Rotisserie

Qty Available: 1
 \$2,428.03 ea

(QUICK-SHIP) Star™ Broil-O-Dog Hot Dog Broiler, 36 dogs & 32 buns capacity, cradle style, over & under hot dog broiler, built-in pull out bun drawer, merchandiser design, glass front, stainless steel, cULus, UL EPH Classified, Made in USA



APW Wyott (Middleby)
BC-50D
Hot Dog Bun Box

Qty Available: 1
 \$1,086.02 ea

Hot Dog Bun Cabinet, 34-11/16", (144) bun capacity, drawer with sliding door, for use with both standard & slanted hotrod rolling grills, stainless steel construction, NSF



APW Wyott (Middleby)
HR-50
Hot Dog Grill

Qty Available: 1
 \$2,848.69 ea

X*PERT™ HotRod® Hot Dog Grill, (11) chrome surface rollers, infinite controls, removable grease pan, stainless steel exterior, coated steel bottom, UL, CSA, NSF, CE



Wells (Middleby)
SMPT-D
Hot Food Well

Qty Available: 1
 \$684.34 ea

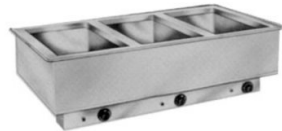
Food Warmer, countertop, electric, one 12" x 20" pan opening, drain, wet/dry operation, thermostatic controls, stainless steel construction, with cordset & 4" legs, UL



Atlas Metal
WIH-4
Hot Food Well Unit, Drop-In, Electric

Qty Available: 1
 \$4,037.69 ea

Hot Food Drop-In Well Unit, electric, 4-well, individual pan design, wet or dry operation, holds (4) 12" x 20" pans, control panel with individual thermostatic controls, stainless steel top & wells, galvanized outer liner, with fiberglass insulation, UL, ETL-Sanitation



Follett Products, LLC (Middleby)
DEV1080SG-60-125
Ice Bin Shuttle System

Qty Available: 1
 \$7,235.87 ea

Ice-Device™ with SmartCART™ 125, 1080 lb. bin storage capacity, with front chute, poly liner, SmartGATE™ ice shield, poly door with PowerHinge™ door hinge, full stainless steel exterior and base, ABS/poly top custom cut for ice machine, includes 82 oz plastic ice scoop, paddle and rake set, and (1) fully insulated polyethylene cart with hinged lid, cart capacity 125 lbs, for cube or Chewlet ice only, NSF



Hoshizaki
B-250PF
Ice Bin for Ice Machines

Qty Available: 1
 \$850.91 ea

Ice Bin, 30"W, top-hinged front-opening door, 250 lb ice storage capacity, for top-mounted ice maker, vinyl clad, painted legs included, protected with H-GUARD Plus Antimicrobial Agent, ETL, ETL-Sanitation



Hoshizaki
B-300SF
Ice Bin for Ice Machines

Qty Available: 1
 \$1,300.01 ea

Ice Bin, 22"W, top-hinged front-opening door, 300-lb ice storage capacity, for top-mounted ice maker, stainless steel exterior, 6" painted flange legs included, protected with H-GUARD Plus Antimicrobial Agent, ETL, ETL-Sanitation



Hoshizaki
B-500SF
Ice Bin for Ice Machines

Qty Available: 1
\$1,446.55 ea

Ice Bin, 30"W, top-hinged front-opening door, 500-lb ice storage capacity, for top-mounted ice maker, stainless steel exterior, painted legs included, protected with H-GUARD Plus Antimicrobial Agent, ETL, ETL-Sanitation



Hoshizaki
B-700SF
Ice Bin for Ice Machines

Qty Available: 1
\$1,791.64 ea

Ice Bin, 44"W, top-hinged front-opening door, 700-lb ice storage capacity, for top-mounted ice makers, stainless steel exterior, painted legs included, protected with H-GUARD Plus Antimicrobial Agent, ETL, ETL-Sanitation



Hoshizaki
B-800SF
Ice Bin for Ice Machines

Qty Available: 1
\$1,933.46 ea

Ice Bin, 48"W, top-hinged front-opening door, 800-lb ice storage capacity, for top-mounted ice makers, stainless steel exterior, painted legs included, protected with H-GUARD Plus Antimicrobial Agent, ETL, ETL-Sanitation



Hoshizaki
B-900SF
Ice Bin for Ice Machines

Qty Available: 1
\$2,032.74 ea

Ice Bin, 52"W, top-hinged front-opening door, 900-lb ice storage capacity, for top-mounted ice makers, stainless steel exterior, painted legs included, protected with H-GUARD Plus Antimicrobial Agent, ETL, ETL-Sanitation



Follett Products, LLC (Middleby)
SG1175S-48
Ice Bin for Ice Machines

Qty Available: 1
\$5,499.36 ea

Upright Ice Bin, single door, 1185 lb. bin storage capacity, stainless exterior, poly liner, SmartGATE™ ice shield, poly door with PowerHinge, and corrosion-resistant ABS/poly top custom cut for ice machine, includes 82 oz. plastic ice scoop, NSF



Follett Products, LLC (Middleby)
SG1300S-48
Ice Bin for Ice Machines

Qty Available: 1
\$5,648.13 ea

Upright Ice Bin, single door, 1320 lb. bin storage capacity, stainless exterior, poly liner, SmartGATE™ ice shield, poly door with PowerHinge, and corrosion-resistant ABS/poly top custom cut for ice machine, includes 82 oz. plastic ice scoop, NSF



Hoshizaki
DB-200H
Ice Dispenser

Qty Available: 1
\$4,245.11 ea

Ice Dispenser, 30"W, 200-lb. built-in storage capacity, accommodates KM-340/350, KM-515/520, KM-650/660 or KML series cubers, ABS molded front, vinyl covered steel side panels, 6" painted legs, ice dispensing area is ADA compliant, 60 watts, 115v/60/1-ph, 1.4 amps, cULus, ETL-Sanitation



Hoshizaki
IM-200BAC
Ice Maker with Bin, Cube-Style

Qty Available: 1
\$4,377.48 ea

Undercounter Ice Maker, Cube-Style, 39-1/2"W, air-cooled, self-contained condenser, production capacity up to 188 lb/24 hours at 70°/50° (150 lb AHRI certified at 90°/70°), 75 lb built-in storage capacity, stainless steel finish, individual square cube style, Evercheck™ digital control with LED display, alert system, removable filter, 6" legs, R404 refrigerant, 115v/60/1-ph, 7.5 amps, NEMA 5-15P, NSF, cETLus, UL



Hoshizaki
KML-325MAJ
Ice Maker, Cube-Style

Qty Available: 1
\$3,588.02 ea

Ice Maker, Cube-Style, 30"W, air-cooled, self-contained condenser, production capacity up to 380 lb/24 hours at 70°/50° (300 lb AHRI certified at 90°/70°), stainless steel finish, crescent cube style, R-404A refrigerant, 115v/60/1-ph, 8.4 amps, NSF, UL



Hoshizaki
KML-325MAJ
Ice Maker, Cube-Style

Qty Available: 1
\$3,588.02 ea

Ice Maker, Cube-Style, 30"W, air-cooled, self-contained condenser, production capacity up to 380 lb/24 hours at 70°/50° (300 lb AHRI certified at 90°/70°), stainless steel finish, crescent cube style, R-404A refrigerant, 115v/60/1-ph, 8.4 amps, NSF, UL



Hoshizaki
KML-500MAJ
Ice Maker, Cube-Style

Qty Available: 1
\$4,112.75 ea

Ice Maker, Cube-Style, 30"W, air-cooled, self-contained condenser, production capacity up to 442 lb/24 hours at 70°/50° (400 lb AHRI certified at 90°/70°), stainless steel finish, crescent cube style, R-404A refrigerant, 115v/60/1-ph, 7.6 amps, NSF, UL (Model Replaced By KMD-505MAJ)



Hoshizaki
KML-700MAJ
Ice Maker, Cube-Style

Qty Available: 1
\$4,845.48 ea

Ice Maker, Cube-Style, 30"W, air-cooled, self-contained condenser, production capacity up to 662 lb/24 hours at 70°/50° (610 lb AHRI certified at 90°/70°), stainless steel finish, crescent cube style, R-404A refrigerant, 115v/60/1-ph, 14.9 amps, NSF, UL, ENERGY STAR® (Model Replaced By KMD-705MAJ)



Hoshizaki
KM-350MAJ
Ice Maker, Cube-Style

Qty Available: 1
\$3,800.75 ea

Ice Maker, Cube-Style, 22"W, air-cooled, self-contained condenser, production capacity up to 489 lb/24 hours at 70°/50° (393 lb AHRI certified at 90°/70°), stainless steel finish, R-404A refrigerant, 115v/60/1-ph, 9.05 amps, NSF, UL, ENERGY STAR®



Hoshizaki
KM-520MAJ
Ice Maker, Cube-Style

Qty Available: 1
\$4,046.56 ea

Ice Maker, Cube-Style, 22"W, air-cooled, self-contained condenser, production capacity up to 556 lb/24 hours at 70°/50° (480 lb AHRI certified at 90°/70°), stainless steel finish, crescent cube style, R-404A refrigerant, 115v/60/1-ph, 10.6 amps, NSF, UL, ENERGY STAR®



Hoshizaki
KM-660MAJ
Ice Maker, Cube-Style

Qty Available: 1
\$4,594.93 ea

Ice Maker, Cube-Style, 22"W, air-cooled, self-contained condenser, production capacity up to 650 lb/24 hours at 70°/50° (560 lb AHRI certified at 90°/70°), stainless steel finish, crescent cube style, R-404A refrigerant, 115v/60/1-ph, 15.2 amps, NSF, UL



Hoshizaki
KM-1601SWJ
Ice Maker, Cube-Style

Qty Available: 1
\$9,156.77 ea

Ice Maker, Cube-Style, 48"W, stackable, water-cooled, self-contained condenser, production capacity up to 1660 lb/24 hours at 70°/50° (1650 lb AHRI certified at 90°/70°), stainless steel exterior, R-404A refrigerant, 208-230v/60/1-ph, 13.6 amps, NSF, UL



BUNN
36700.0009
Iced Tea Brewer

Qty Available: 1
\$863.14 ea

36700.0009 TB3 Iced Tea Brewer, 3-gallon capacity single brewer, 16.3 gallon/hour, SplashGard® funnel, adjustable steep time, (dispensers sold separately), 120v/60/1-ph, 1730w, 14.4amps, NEMA 5-15P, cord attached, UL, NSF



Waring
WSB60
Immersion Blender

Qty Available: 1
\$691.43 ea

Big Stix® Immersion Blender, heavy duty, 100 qt. (25 gallon) capacity, 16" stainless steel removable shaft, variable speed motor, continuous ON feature, rubberized comfort grip, 1 HP, 120v, 750W, 6.25 amps, NSF



Robot Coupe
CMP250VV
Immersion Hand Mixer

Qty Available: 1
\$517.90 ea

Compact Power Mixer, hand held, 15 liter processing capacity, 10" stainless steel shaft, removable stainless steel knife & mixer blade, splash guard, ergonomically shaped handle, includes: (1) stainless steel wall support & (1) blade disassembly tool, variable speed 5,000 - 10,000 RPM, 310 watts, 120v/60/1-ph, 3.0 amps, NEMA 5-15P, cETLus, ETL-Sanitation



Robot Coupe
CMP400VV
Immersion Hand Mixer

Qty Available: 1
\$682.29 ea

Compact Power Mixer, hand held, 73 liter processing capacity, 16" stainless steel shaft, removable stainless steel knife & mixer blade, splash guard, ergonomically shaped handle, includes: (1) stainless steel wall support & (1) blade disassembly tool, variable speed 5,000 - 10,000 RPM, 420 watts, 120v/60/1-ph, NEMA 5-15P, cETLus, ETL-Sanitation



Robot Coupe
MP550
Immersion Hand Mixer

Qty Available: 1
\$1,209.77 ea

Commercial Power Mixer, hand held, 21" stainless steel shaft, removable stainless steel foot & blade, includes: (1) stainless steel wall support & (1) blade disassembly tool, 200 liter processing capacity, automatic single speed 12,000 RPM, 1.2 HP, 120v/60/1-ph, 7.0 amps, 840 watts, NEMA 5-15P, "Easy plug" system with detachable power cord, cETLus, ETL-Sanitation



Robot Coupe
MP600
Immersion Hand Mixer

Qty Available: 1
\$1,541.74 ea

Commercial Power Mixer, hand held, 24" stainless steel shaft, removable stainless steel foot & blade, includes: (1) stainless steel wall support & (1) blade disassembly tool, 300 liter processing capacity, automatic single speed 12,000 RPM, 1.5 HP, 120v/60/1-ph, 7.7 amps, 920 watts, NEMA 5-15P, "Easy plug" system with detachable power cord, cETLus, ETL-Sanitation



CookTek (Middleby)
600501
Induction Range, Countertop

Qty Available: 1
\$1,345.28 ea

(MC1500) Heritage Induction Range, countertop, single hob, glass-ceramic top, sloped front, temperature control knob, microprocessor with (20) power cook settings & auto shut-off, self-diagnostics, LED display, integral cooling fan & grease filter, stainless steel housing, 6 ft. cord, NEMA 5-15P, 100-120v/50/60/1-ph, 1500 watts, 14.0 amps, cETLus, NSF, CE, Made in USA



CookTek (Middleby)
620101
Induction Range, Countertop

Qty Available: 1
\$1,713.39 ea

(MC1800G) Apogee™ Induction Range, countertop, single hob, glass-ceramic top, sloped front, built-in cooking timer, (100) power cook & temperature settings with lock feature, auto shut-off, microprocessor, self-diagnostics, LCD display, integral cooling fan & grease filter, stainless steel housing, 6 ft. cord, NEMA 5-15P, 100-120v/50/60/1-ph, 1800 watts, 15.0 amps, cETLus, NSF, CE, Made in USA



**Cleveland Range
KET6T
Kettle, Electric, Countertop**

**Qty Available: 1
\$8,667.14 ea**

Tilting Kettle, electric, countertop, 6-gallon (23L) capacity, 2/3 steam jacket design, self-contained, lever style tilting, anti-drip pour spout, IPX6 water protection controls, self-locking marine style safety latch, reinforced rolled rim, support console on right, stainless steel construction with 316 series stainless steel liner, 50 PSI rated



**Cleveland Range
TKET12T
Kettle, Electric, Countertop**

**Qty Available: 1
\$26,183.52 ea**

Tilting Kettle, electric, twin unit, countertop, 12 gallon (45L each) capacity each, 2/3 steam jacket design, self-contained, lever style-tilting, anti-drip pour spout, IPX6 water protection controls, self-locking marine style safety latch, reinforced rolled rim, center support console, stainless steel construction with 316 series stainless steel liner, 50 PSI



**Cleveland Range
TKET6T
Kettle, Electric, Countertop**

**Qty Available: 1
\$20,768.81 ea**

Tilting Kettle, electric, twin unit, countertop, 6 gallon (23L each) capacity each, 2/3 steam jacket design, self-contained, lever style-tilting, anti-drip pour spout, IPX6 water protection controls, self-locking marine style safety latch, reinforced rolled rim, center support console, stainless steel construction with 316 series stainless steel liner, 50 PSI



**Cleveland Range
TKET3T
Kettle, Electric, Countertop**

**Qty Available: 1
\$17,280.41 ea**

Tilting Kettle, electric, twin unit, countertop, 3 gallon (11L each) capacity each, 2/3 steam jacket design, self-contained, lever style-tilting, anti-drip pour spout, IPX6 water protection controls, self-locking marine style safety latch, reinforced rolled rim, center support console, stainless steel construction with 316 series stainless steel liner, 50 PSI



**Cleveland Range
KET12T
Kettle, Electric, Countertop**

**Qty Available: 1
\$10,487.77 ea**

Tilting Kettle, electric, countertop, 12-gallon (45L) capacity, 2/3 steam jacket design, self-contained, lever style tilting, anti-drip pour spout, IPX6 water protection controls, self-locking marine style safety latch, reinforced rolled rim, support console on right, stainless steel construction with 316 series stainless steel liner, 50 PSI rated



**Cleveland Range
KET3T
Kettle, Electric, Countertop**

**Qty Available: 1
\$7,762.20 ea**

Tilting Kettle, electric, countertop, 3-gallon (11L) capacity, 2/3 steam jacket design, self-contained, lever style tilting, anti-drip pour spout, IPX6 water protection controls, self-locking marine style safety latch, reinforced rolled rim, support console on right, stainless steel construction with 316 series stainless steel liner, 50 PSI rated



**Cleveland Range
KEL80
Kettle, Electric, Stationary**

**Qty Available: 1
\$32,434.43 ea**

Kettle, electric, 80-gallon capacity, 2/3 steam jacket design, open tri-leg base, faucet bracket, strainer, 50 psi rating, solid state water level control, 2" tangent draw-off, spring-assisted cover, 316 series stainless steel interior, flanged feet, IPX6



**Cleveland Range
KEL60
Kettle, Electric, Stationary**

**Qty Available: 1
\$25,317.06 ea**

Kettle, electric, 60-gallon capacity, 2/3 steam jacket design, open tri-leg base, faucet bracket, strainer, 50 psi rating, solid state water level control, 2" tangent draw-off, spring-assisted cover, 316 series stainless steel interior, flanged feet, IPX6



**Cleveland Range
KEL40
Kettle, Electric, Stationary**

**Qty Available: 1
\$19,623.79 ea**

Kettle, electric, 40-gallon capacity, 2/3 steam jacket design, 316 stainless steel interior, open tri-leg base, faucet bracket, strainer, 50 psi rating, solid state water level control, 2" tangent draw-off, spring-assisted cover, 304 stainless steel construction with 316 series stainless steel liner, flanged feet, IPX6



**Cleveland Range
KEL30
Kettle, Electric, Stationary**

**Qty Available: 1
\$19,226.21 ea**

Kettle, electric, 30-gallon capacity, 2/3 steam jacket design, open tri-leg base, faucet bracket, strainer, 50 psi rating, solid state water level control, 2" tangent draw-off, spring-assisted cover, 304 stainless steel construction with 316 series stainless steel liner, flanged feet, IPX6



**Cleveland Range
KEL25
Kettle, Electric, Stationary**

**Qty Available: 1
\$19,051.79 ea**

Kettle, electric, 25-gallon capacity, 2/3 steam jacket design, open tri-leg base, faucet bracket, strainer, 50 psi rating, solid state water level control, 2" tangent draw-off, spring-assisted cover, 304 stainless steel construction with 316 series stainless steel liner, flanged feet, IPX6



**Cleveland Range
KGL80
Kettle, Gas, Stationary**

**Qty Available: 1
\$33,488.64 ea**

Kettle, gas, stationary, 80-gallon capacity, 2/3 steam jacket, self-contained, floor mounted control console supports, electronic ignition, 316 series stainless steel interior, faucet mounting bracket, flanged feet, 2" tangent draw-off with strainer, spring-assisted cover, 50 psi rating, 190,000 BTU



**Cleveland Range
KGL60
Kettle, Gas, Stationary**

**Qty Available: 1
\$30,053.59 ea**

Kettle, gas, stationary, 60-gallon capacity, 2/3 steam jacket, self-contained, floor mounted control console supports, electronic ignition, 316 series stainless steel interior, faucet mounting bracket, flanged feet, 2" tangent draw-off with strainer, spring-assisted cover, 50 psi rating, 190,000 BTU



**Cleveland Range
KGL40
Kettle, Gas, Stationary**

**Qty Available: 1
\$24,100.74 ea**

Kettle, gas, stationary, 40-gallon capacity, 2/3 steam jacket, 316 stainless steel interior, self-contained, floor mounted control console supports, electronic ignition, 304 stainless steel finish, faucet mounting bracket, flanged feet, 2" tangent draw-off with strainer, spring-assisted cover, 50 psi rating, 140,000 BTU



**Cleveland Range
KGL25
Kettle, Gas, Stationary**

**Qty Available: 1
\$21,458.79 ea**

Kettle, gas, stationary, 25-gallon capacity, 2/3 steam jacket, self-contained, floor mounted control console supports, electronic ignition, stainless steel exterior with 316 series stainless steel interior, faucet mounting bracket, flanged feet, 2" tangent draw-off with strainer, spring-assisted cover, 50 psi rating, 90,000 BTU



**Cleveland Range
KGL60T
Kettle, Gas, Tilting**

**Qty Available: 1
\$37,559.81 ea**

Kettle, gas, tilting, 60-gallon capacity, 2/3 steam jacket design, with floor mounted control console supports, 316 series stainless steel interior, flanged feet, 50 psi rating, electronic spark ignition, cover & draw-off optional, 190,000 BTU



**Cleveland Range
KGL40T
Kettle, Gas, Tilting**

**Qty Available: 1
\$36,382.99 ea**

Kettle, gas, tilting, 40-gallon capacity, 2/3 steam jacket design, 316 stainless steel interior, floor mounted control console supports, 304 stainless steel construction, flanged feet, 50 psi rating, electronic spark ignition, cover & draw-off optional, 140,000 BTU



**Cleveland Range
KGL25T
Kettle, Gas, Tilting**

**Qty Available: 1
\$33,041.30 ea**

Kettle, gas, manual tilting, 25-gallon capacity, 2/3 steam jacket design, electronic spark ignition, solid-state control panel, floor mounted control console supports, 304 stainless steel construction with 316 series stainless steel liner, flanged feet, 50 psi rating, cover & draw-off optional, 90,000 BTU



**Cleveland Range
KGL60T
Kettle, Gas, Tilting**

**Qty Available: 1
\$37,559.81 ea**

Kettle, gas, tilting, 60-gallon capacity, 2/3 steam jacket design, with floor mounted control console supports, 316 series stainless steel interior, flanged feet, 50 psi rating, electronic spark ignition, cover & draw-off optional, 190,000 BTU



**Cleveland Range
KGL40T
Kettle, Gas, Tilting**

**Qty Available: 1
\$36,382.99 ea**

Kettle, gas, tilting, 40-gallon capacity, 2/3 steam jacket design, 316 stainless steel interior, floor mounted control console supports, 304 stainless steel construction, flanged feet, 50 psi rating, electronic spark ignition, cover & draw-off optional, 140,000 BTU



**Cleveland Range
KGL25T
Kettle, Gas, Tilting**

**Qty Available: 1
\$33,041.30 ea**

Kettle, gas, manual tilting, 25-gallon capacity, 2/3 steam jacket design, electronic spark ignition, solid-state control panel, floor mounted control console supports, 304 stainless steel construction with 316 series stainless steel liner, flanged feet, 50 psi rating, cover & draw-off optional, 90,000 BTU



**Abscold
AM090HB
Microwave**

**Qty Available: 1
\$106.70 ea**

Abscold® Compact Microwave Oven 0.9 cu. ft./900 Watts, Black Exterior, 120V 10.71"H x 18.62"W x 14.72"D *Available Mid-July 2023*



**TurboChef (Middleby)
C3
Microwave Convection /
Impingement Oven**

**Qty Available: 1
\$11,423.37 ea**

C3™ Speed Cook Oven, Rapid Cook, electric, ventless, countertop, single deck, 128 cooking profiles, internal catalytic converter, digital display, (1) ceramic cook platter & ceramic wave guide cover, (1) wooden paddle, (1) oven cleaner, (1) oven guard, (2) 12" x 12" PTFE mesh screens, (2) trigger sprayers, stainless steel front, top, sides, & back, 4" adjustable legs, 7.4kW, cULus, CE, NSF, CB



**ACP
RCS10TS
Microwave Oven**

**Qty Available: 1
\$628.43 ea**

Amana® Commercial Microwave Oven, 1000 watts, 1.2 cu. ft. capacity, medium volume, 4-stage cooking, (5) power levels, (100) memory settings, braille touch pads, non-removable air filter, side hinged door with tempered glass, accommodates 14" plate, stainless steel interior & exterior, 120v/60/1-ph, 13.0 amps, 15 MCA, 1550 watts (total), NEMA 5-15P, cETLus, ETL-Sanitation



**ACP
RFS12TS
Microwave Oven**

**Qty Available: 1
\$1,252.86 ea**

Amana® Commercial Microwave Oven, 1.2 cu. ft., 1200 watts, medium volume, 4-stage cooking, (5) power levels, (100) memory settings, 60-minute max cooking time, LED display, touch control, ADA-compliant Braille touch pads, audible end of cycle signal, side hinged door with tempered glass, lighted interior, sealed-in ceramic shelf, stainless steel exterior & interior, 120v/60/1-ph, 16.0 amps, 20 MCA, 2000 watts (total), NEMA 5-20P, cETLus, ETL-Sanitation



**ACP
RFS18TS
Microwave Oven**

**Qty Available: 1
\$1,452.36 ea**

Amana® Commercial Microwave Oven, 1.2 cu. ft., 1800 watts, medium volume, 4-stage cooking, (5) power levels, (100) memory settings, 60-minute max cooking time, LED display, touch control, ADA-compliant Braille touch pads, audible end of cycle signal, side hinged door with tempered glass, lighted interior, sealed and recessed ceramic shelf, stainless steel exterior & interior, 208-240v/60/1-ph, 13.5 amps, 20 MCA, 2800 watts (total), NEMA 6-20P, cETLus, ETL-Sanitation



**Danby
DMW799BL
Microwave Oven**

**Qty Available: 1
\$68.40 ea**

700 Watt microwave oven; 10 power levels, black finish
Voltage: 120/60/1



**Silver King
SKMAJ1-ESUS3
Milk Dispenser**

**Qty Available: 1
\$3,826.98 ea**

Majestic Series Milk Dispenser, refrigerated, single spring-loaded valve, 6 gallon capacity, (accommodates 3, 5, or 6 gallon bags), includes (1) crate, stainless steel interior & exterior with galvanized bottom, shipboard legs, bottom-mounted self-contained refrigeration, R290 Hydrocarbon refrigerant, 1/10 HP, 115v/60/1-ph, 1.5 amps, NEMA 5-15P, cETLus, ETL-Sanitation



**Silver King
SKMAJ2-ESUS3
Milk Dispenser**

**Qty Available: 1
\$4,212.00 ea**

Majestic Series Milk Dispenser, refrigerated, double valve - spring loaded, 12 gallon capacity, (accommodates 3, 5, or 6 gallon bags), includes (2) crates, stainless steel interior & exterior with galvanized bottom, shipboard legs, bottom-mounted self-contained refrigeration, R290 Hydrocarbon refrigerant, 1/10 HP, 115v/60/1-ph, 1.5 amps, NEMA 5-15P, cETLus, ETL-Sanitation



**Silver King
SKMAJ3-ESUS3
Milk Dispenser**

**Qty Available: 1
\$5,054.40 ea**

Majestic Series Milk Dispenser, refrigerated, triple valve-spring loaded, 18 gallon capacity, (accommodates 3, 5, or 6 gallon bags), includes (3) crates, stainless steel interior & exterior with galvanized bottom, shipboard legs, bottom-mounted self-contained refrigeration, R290 Hydrocarbon refrigerant, 1/6 HP, 115v/60/1-ph, 2.1 amps, NEMA 5-15P, cETLus, ETL-Sanitation



**Hobart
HCM450-3
Mixer, Vertical Cutter VCM**

**Qty Available: 1
\$28,161.00 ea**

460/60/3 (requires 20 amp service, 11 amps drawn); Cutter Mixer; includes Cut-Mix attachment, Knead-Mix attachment, Strainer Basket, & Mixing Baffle arm; does not include casters, US/EXPORT configuration



**Metro
C537-HFC-4
Mobile Heated Cabinet**

**Qty Available: 1
\$2,879.94 ea**

C5™ 3 Series Heated Holding Cabinet, with Red Insulation Armour™, mobile, 3/4 height, insulated, clear polycarbonate door, removable bottom mount control module, thermostat to 200°F, fixed wire slides on 3" centers (14) 18" x 26" or (26) 12" x 20" x 2 1/2" pan capacity, 5" casters (2 with brakes), aluminum, 120v/60/1 ph, 2000 watts, 16.7 amps, NEMA 5 20P, cULus, NSF



**APW Wyatt (Middleby)
ML2-12A
Mobile Plate and Dish
Dispenser**

**Qty Available: 1
\$8,814.99 ea**

Adjustube® II Dish Dispenser, mobile, enclosed cabinet, (2) self-elevating dish dispensing tubes, maximum dish size approximately 12" diameter, stainless steel construction, NSF, UL, CSA



**Carter-Hoffmann (Middleby)
PHB450HE
Mobile Refrigerator Cabinet**

**Qty Available: 1
\$11,786.84 ea**

Refrigerated Cabinet, mobile, insulated, bottom-mounted, (30) 18"x 26" sheet pans, slide spacing fixed on 1-1/2" centers, stainless steel construction, 6" swivel casters, energy management system with dual layer foamboard & fiberglass insulation meets DOE standard, cULus, NSF (RapidShip)



**Carter-Hoffmann (Middleby)
PHB650HE
Mobile Refrigerator Cabinet**

**Qty Available: 1
\$15,183.61 ea**

Refrigerated Cabinet, mobile, (2) door, insulated, bottom-mounted, (60) 18"x26" sheet pans, slides fixed on 1-1/2" centers, stainless steel construction, 6" casters (2 swivel, 2 rigid), energy management system with dual layer foamboard & fiberglass insulation meets DOE standard, cULus, NSF



**Beverage Air
BZ13HC-B
Open Display Merchandiser**

**Qty Available: 1
\$5,208.21 ea**

The Breeze Open Display Case, 30"W, 7.38 cu. ft., deck & (3) adjustable shelves, lighted sign panel, recessed interior lighting, white interior, black exterior, bottom mount self-contained refrigeration, R290 Hydrocarbon Refrigerant, 1/2 HP, cULus, UL EPH Classified, UL-Sanitation, Made in USA



**TurboChef (Middleby)
I5
Oven**

**Qty Available: 1
\$24,274.60 ea**

i5-9500-1, I5™ Microwave/Impingement Oven, Rapid Cook, electric, 28.1" wide, ventless, countertop, fully insulated cook chamber, stores up to 200 recipes, internal catalytic converter, smart voltage sensor technology (US only), digital display, removable rack and grease collection pan, top and bottom jet plates, pull down door with ergonomic handle, multi-speed impingement blower, 13 1/2" x 14 1/4", (2) solid PTFE baskets, TurboChef Cleaner and Guard Starter Kit, includes (1) cleaner packet, (1) 24oz bottle, (1) Guard bottle and (2) foamer trigger, (1) standard rack, side hand grips, stainless steel front, top & sides, cULus, CE, UL EPH Classified, ANSI/NSF 4, TUV



**Blodgett (Middleby)
951 SINGLE
Oven, Deck-Type, Gas**

**Qty Available: 1
\$13,585.50 ea**

Oven, deck-type, gas, 42"W x 32"D deck interior, (1) 12" high section, (FTDO) 200-500°F mechanical thermostat, counter-balanced doors with heavy chrome handle, angle iron frame, steel deck, crown angle trim, aluminized steel interior, stainless steel top, front, sides and back, 27-1/2" stainless steel adjustable legs, 38,000 BTU, cETLus, NSF, CE



**Blodgett (Middleby)
951 DOUBLE
Oven, Deck-Type, Gas**

**Qty Available: 1
\$25,653.60 ea**

Oven, deck-type, gas, 42"W x 32"D deck interior, (2) 12" high sections, (FTDO) 200-500°F mechanical thermostat, counter-balanced doors with heavy chrome handle, angle iron frame, steel deck, crown angle trim, aluminized steel interior, stainless steel top, front, sides and back, 7" stainless steel adjustable legs, 38,000 BTU per section, cETLus, NSF, CE



**Plate-Mate
PM84-136
PLATE RACK**

**Qty Available: 1
\$819.00 ea**

Holding Capacity: up to 84 plates Our Best Priced Model 600 Pound Load Capacity Powder Coated Carbon Steel Frame Total Height: 75" (190.5 cm) Measurements of Under-Carriage 25.5" x 25.5" (48 x 48 cm) Net Weight: 47 lb. (27.3 kg) Gross Shipping Weight: 60 lb. (32 kg) Box: 72" x 28" x 11"



**Waring
WPG250
Panini Grill**

**Qty Available: 1
\$739.64 ea**

Panini Supremo™ Large Panini Grill, electric, single, 14-1/2" x 11" cooking surface, hinged auto-balancing top plate with heat resistant handles, ribbed cast iron plates, adjustable thermostat 570°F (300°C), indicator lights, brushed stainless steel body & removable drip tray, 1.8kW, 120v/60/1-ph, 15.0 amps, NEMA 5-15P, UL, NSF



**Waring
WPG300
Panini Grill**

**Qty Available: 1
\$951.92 ea**

Panini Ottimo™ Dual Panini Grill, electric, double, 17" x 9-1/4" cooking surface, hinged auto-balancing top plate with heat resistant handles, ribbed cast iron plates, adjustable thermostats 570°F (300°C), indicator lights, brushed stainless steel body & removable drip tray, 3.2kW, 240v/60/1-ph, 13.3 amps, NEMA 6-20P, UL, NSF



**Waring
WDG300
Panini Grill**

**Qty Available: 1
\$951.92 ea**

Dual Surface Panini Grill, electric, double, 17" x 9-1/4" cooking surface, hinged auto-balancing top plate with heat resistant handles, half ribbed & half flat grill, adjustable thermostats 570°F (300°C), indicator lights, brushed stainless steel body & removable drip tray, 3.2kW, 240v/60/1-ph, 13.3 amps, NEMA 6-20P, UL, NSF



**Waring
WPG150
Panini Grill**

**Qty Available: 1
\$547.87 ea**

Panini Perfetto™ Compact Panini Grill, electric, single, 9-1/4" x 9-3/4" cooking surface, hinged auto-balancing top plate with heat resistant handles, ribbed cast iron plates, adjustable thermostat 570°F (300°C), indicator lights, brushed stainless steel body & removable drip tray, 120v/60/1-ph, 15.0 amps, NEMA 5-15P, UL, NSF



**Crown Verity
CV-2620-SS
Patio Heater**

**Qty Available: 1
\$498.60 ea**

Patio Heater, portable, propane, 18-1/4" base x 35-1/2" reflector dia., 90"H, uses a 20 lb. or 30 lb. propane cylinder (not included), Piezo electric ignition, water-resistant, adjustable heat output, wheel kit included, stainless steel



**Blodgett (Middleby)
961P SINGLE
Pizza Bake Oven, Deck-Type, Gas**

**Qty Available: 1
\$15,766.20 ea**

Pizza Oven, deck-type, gas, 42"W x 32"D deck interior, (1) 7" high section, (FDTH) 300-650°F mechanical thermostat, QHT Rokite deck, crown angle trim, counter-balanced door with concealed hinges, full angle iron frame, stainless steel top, front, sides and back, 27-1/2" stainless steel legs, 50,000 BTU, cETLus, NSF, CE



**Blodgett (Middleby)
961P DOUBLE
Pizza Bake Oven, Deck-Type, Gas**

**Qty Available: 1
\$30,408.30 ea**

Pizza Oven, deck-type, gas, 42"W x 32"D deck interior, (2) 7" high sections, (FDTH) 300-650°F mechanical thermostat, QHT Rokite deck, counter-balanced doors with concealed hinges, full angle iron frame, crown angle trim, stainless steel top, front, sides and back, 19" stainless steel legs, flue connector, 50,000 BTU per section, cETLus, NSF, CE



**Hobart
HL200-1STD
Planetary Mixer**

**Qty Available: 1
\$8,954.40 ea**

100-120/50/60/1; Bench type mixer; with bowl, beater, whip & spiral dough arm, US/EXP configuration - Legacy Planetary Mixer, Bench, 20 quart, (3) fixed speeds plus stir speed, gear-driven transmission, 15-minute SmartTimer™, #12 taper hub, manual bowl lift, stainless steel bowl, aluminum "B" beater, stainless steel "D" wire whip, aluminum "ED" spiral dough arm, stainless steel bowl guard, 1/2 hp, cord with plug



**Hobart
HL400-1STD
Planetary Mixer**

**Qty Available: 1
\$22,117.20 ea**

200-240/50/60/3 Mixer; with bowl, beater, whip, & spiral dough arm; US/EXP configuration - Legacy Planetary Mixer, 1.5 hp, 40 quart capacity, (3) fixed speeds, gear-driven transmission, 20 minute timer, #12 taper attachment hub, manual bowl lift, bowl guard, stainless steel bowl, "B" beater, "D" whip, "ED" dough hook



**Hobart
N50-60
Planetary Mixer**

**Qty Available: 1
\$4,947.60 ea**

100-120/60/1 Mixer with bowl, aluminum beater, whip, & dough arm; US/EXP configuration Mixer, Planetary, Bench, 5 quart, (3) fixed speeds, gear-driven transmission, #10 taper attachment hub, manual bowl lift, Hobart Gray enamel housing, stainless steel bowl, alum "B" beater, stainless steel "D" wire whip, alum dough hook, 1/6 hp, cord with plug



**Hobart
HL120-1STD
Planetary Mixer**

**Qty Available: 1
\$8,790.60 ea**

100-120/50/60/1; Bench type mixer; with bowl, beater, & whip; US/EXP configuration - Mixer, Planetary, Bench, 12 quart capacity, (3) fixed speeds plus stir speed, gear-driven transmission, 15-Minute SmartTimer™, #12 taper attachment hub, manual bowl lift, stainless steel bowl, aluminum "B" beater, stainless steel "D" wire whip, stainless steel bowl guard, 1/2 hp, cord with plug



**Hobart
HL800-1STD
Planetary Mixer**

**Qty Available: 1
\$46,162.20 ea**

Legacy Planetary Mixer, 80 quart, (4) fixed speeds plus stir speed, gear-driven transmission, 20-Minute SmartTimer™, power bowl lift, stainless steel bowl guard, stainless steel bowl, "B" beater, "ED" dough hook, bowl truck, 3.0 HP, 200-240v/50/60/3-ph (US & Export configuration)



**Hobart
HL600-1STD
Planetary Mixer**

**Qty Available: 1
\$30,994.32 ea**

200-240/50/60/3/1 Mixer; with bowl, beater, "D" whip, & spiral dough arm; US/EXP configuration - Legacy Planetary Mixer, 2.7 HP, 60 quart, (4) fixed speeds, gear-driven transmission, 20-Minute SmartTimer™, #12 attach hub, power bowl lift, stainless steel bowl, stainless steel bowl guard, "B" beater, "D" wire whip, "ED" dough hook



**Hatco
TPT-120
Pop-Up Toaster**

**Qty Available: 1
\$321.60 ea**

Pop-Up Toaster, (4) 1-1/4" wide self centering slots, individual manual controls, removable crumb tray, stainless steel construction, cULus, UL EPH Classified



**Hatco
TPT-208
Pop-Up Toaster**

**Qty Available: 1
\$580.20 ea**

Pop-Up Toaster, (4) 1-1/4" wide self centering slots, individual toasting controls, selector switch for double or single sided toasting, removable crumb tray, stainless steel construction, cULus, UL EPH Classified



**Star (Middleby)
39-A
Popcorn Popper**

**Qty Available: 1
\$903.91 ea**

JetStar™ Popcorn Machine, electric, countertop, 6 oz. kettle capacity, (135) 1 oz. servings/hr., interior heating lamp, 1/8" thick tempered glass, stainless steel food zone, aluminum posts with yellow top cap, cULus, NSF, Made in USA



Star (Middleby)
86S
Popcorn Popper

Qty Available: 1
\$1,004.97 ea

Super JetStar™ Popcorn Machine, electric, countertop, 8 oz. kettle capacity, (170) 1 oz. servings/hr., interior heating lamp, 1/8" thick tempered glass, stainless steel food zone, aluminum posts with stainless steel finish, cULus, UL EPH Classified, Made in USA



Star (Middleby)
G12-Y
Popcorn Popper

Qty Available: 1
\$1,972.49 ea

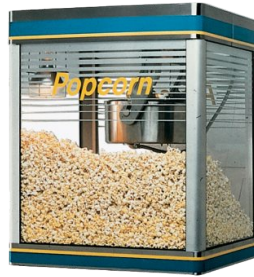
Galaxy® Popcorn Machine, electric, countertop, 12 oz. kettle capacity, (240) 1 oz. servings/hr., interior heating lamp, 1/8" thick tempered glass, stainless steel food zone, aluminum posts with stainless steel finish, cULus, NSF, Made in USA



Star (Middleby)
G14-Y
Popcorn Popper

Qty Available: 1
\$2,279.26 ea

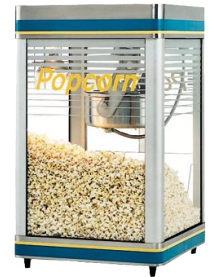
Galaxy® Popcorn Machine, electric, countertop, 14 oz. kettle capacity, (280) 1 oz. servings/hr., interior heating lamp, 1/8" thick tempered glass, stainless steel food zone, aluminum posts with stainless steel finish, cULus, NSF, Made in USA



Star (Middleby)
G8-Y
Popcorn Popper

Qty Available: 1
\$1,756.00 ea

Galaxy® Popcorn Machine, electric, countertop, 8 oz. kettle capacity, (170) 1 oz. servings/hr., interior heating lamp, 1/8" thick tempered glass, stainless steel food zone, aluminum posts with stainless steel finish, cULus, NSF, Made in USA



Star (Middleby)
J4R
Popcorn Popper

Qty Available: 1
\$669.98 ea

Mini JetStar™ Popcorn Machine, electric, countertop, 4 oz. kettle capacity, (115) 1 oz. servings/hr., interior flood lamp, heated corn pan, polycarbonate wrap, stainless steel food zone, red antique styling, cULus, UL EPH Classified, Made in USA



Abscold
ARD204AB21R/L (REPLACES
ARD204AB21R)
Refrigerator

Qty Available: 1
\$280.93 ea

Guestroom refrigerator with auto defrost Quick Chill / Snooze feature standard
Dimensions: 22-3/8" H x 18-1/2" W x 19" D Cubic Capacity: 2.0 cu. ft. Exterior Finish: Black Voltage: 115/60/1



Berkel
300M-STD
Proscuitto Slicer

Qty Available: 1
\$13,957.44 ea

Fly Wheel Slicer, 12" chromium-plated carbon steel knife, manual, automatic feeding, integrated dual action sharpener, rear knife guard, no motor, stainless steel and anodized aluminum, classic Berkel red, NSF



Carter-Hoffmann (Middleby)
T726
Queen Mary

Qty Available: 1
\$3,756.91 ea

Queen Mary China & Silver Transporter, open design, six shelves, shelf size 27" x 72", push handle, shelf clearance 8", 2 swivel, 2 rigid 8" casters, aluminum tubular frame



Danby
DAR044A4BDD
REFRIGERATOR

Qty Available: 1
\$252.00 ea

Single Door 4.4 cu.ft. Energy Star Rated All-Refrigerator; Auto Defrost; Second Generation Canstor Beverage Dispensing System; 2.5 Wire Shelves; Tall Bottle Storage; Reversible Door Swing; Smooth Back Design; Interior Light. 18 Months parts and labor warranty.



Plate-Mate
PM84-135
Rack

Qty Available: 1
\$1,138.80 ea

Collapsible/ folding mobile plate rack holds 84

Vulcan
36S-6B
Range, 36", 6 Open Burners

Qty Available: 1
\$3,672.98 ea

Endurance™ Restaurant Range, gas, 36", (6) 30,000 BTU burners, lift-off burner heads, standard oven, stainless steel front, sides, backriser, & lift-off high shelf, fully MIG welded chassis, 6" adjustable legs, 215,000 BTU, CSA, NSF



Vulcan
60SS-6B24GB
Range, 60", 6 Burners, 24" Griddle/Broiler

Qty Available: 1
\$8,597.00 ea

Endurance™ Restaurant Range, gas, 60", (6) 30,000 BTU burners with lift-off burner heads, (1) 24" manual griddle/broiler, 3/4" thick, 4" wide front grease trough, (2) standard oven bases, stainless steel front, sides, backriser & high shelf, fully MIG welded frame, 6" adjustable legs, 268,000 BTU, CSA Flame, CSA Star, NSF



Vulcan
EV60SS-10FP208
Range, 60", 10 French Hot Plates

Qty Available: 1
\$19,237.06 ea

Restaurant Range, electric, 60", (10) 2.0 kW French hotplates, 9-1/2" solid cast iron, infinite controls, (1) standard & (1) oversized oven with (1) rack each, stainless steel front, sides, single-deck high shelf & 6" legs, 208v, NSF, cCSAus



Vulcan
60SS-10B
Range, 60", 10 Open Burners

Qty Available: 1
\$7,214.45 ea

Endurance™ Restaurant Range, gas, 60", (10) 30,000 BTU burners with lift-off burner heads, (2) standard oven bases, stainless steel front, sides, backriser & high shelf, fully MIG welded frame, 6" adjustable legs, 358,000 BTU, CSA, NSF



Merrychef USA
E3
Rapid Cook Oven

Qty Available: 1
\$5,075.62 ea

eikon™ Convection and Microwave Small Speed Oven, (2) rack positions, ventless cooking capability, EasyTouch™ controls, USB memory, built-in diagnostic testing, bottom-hinged door, includes: (2) cast turntables, NSF, "40H0347ANO", (1) cool down pan "32Z4043", (1) cleaner kit "32Z4148", (1) turntable disk "40H0249", (1) oven tray handle "SR313", (1) teflon sheet "40H0190" & (2) chromium plated steel racks "DR0056", stainless steel construction, NEMA 6-30P, 30 amp, 4.7kW, 208/240v/60/1-ph, CE, NSF, cULus



Merrychef USA
E4
Rapid Cook Oven

Qty Available: 1
\$11,270.10 ea

eikon™ Convection, Air Impingement and Microwave Speed Oven, ventless cooking capability, EasyTouch™ controls, USB memory, built-in diagnostic testing, bottom-hinged door, includes: (1) wire rack "DV0907", (1) cool down pan "32Z4028", (1) cleaner kit "32Z4148", (1) paddle "PSR310", (1) large mesh teflon basket "32Z4031" & (1) solid bottom teflon basket "32Z4070", stainless steel construction, 6.2kW, 208/240v/60/1-ph, 30 amp, NEMA 6-30P, CE, cULus, NSF, ETL



**Merrychef USA
E5
Rapid Cook Oven**

**Qty Available: 1
\$10,144.58 ea**

eikon™ Convection and Microwave Large Speed Oven, (2) rack positions, ventless cooking capability, EasyTouch™ controls, USB memory, built-in diagnostic testing, bottom-hinged door, includes: (1) wire rack "40C1011", (1) cool down pan "32Z4028" & (1) cleaner kit "32Z4148", stainless steel construction, 6.2kW, 208/240v/60/1-ph, 30 amp, NEMA 6-30P, CE, NSF, cULus Classified



**TurboChef (Middleby)
SOTA
Rapid Cook Oven**

**Qty Available: 1
\$14,450.90 ea**

Sota™ Convection/Microwave Oven, Rapid Cook, electric, 16" wide, ventless, countertop, insulated cook chamber, stores up to 256 recipes, internal catalytic converter, LED timer, pull down door with ergonomic handle, multi-speed convection blower, removable rack and bottom jetplate, smart voltage sensor technology (US only), includes (2) solid aluminum pan, (1) oven cleaner, (1) oven guard, (1) aluminum paddle, (2) trigger sprayers, (1) standard rack, stainless steel interior, powder coated, corrosion-resistant steel outer wrap and door, 4" legs, cULus, CE, UL EPH Classified, ANSI/NSF 4, TUV



**TurboChef (Middleby)
ENC-9600-645-BLACK
Rapid Cook Oven**

**Qty Available: 1
\$14,187.31 ea**

Marriott Courtyard Bullet™ Convection/Microwave Oven, Rapid Cook, electric, 21.1" wide, ventless, countertop, fully insulated cook chamber, stores up to 256 recipes, internal catalytic converter, smart voltage sensor technology (US only), digital display, removable rack and grease collection pan, bottom jet plate, pull down door with ergonomic handle, 13 1/2" x 14 1/4", (2) solid PTFE baskets, (1) oven cleaner (1) oven guard, (1) aluminum paddle, (2) trigger sprayers, (1) baking stone & oven rack, ENC-3012 fiber stone, ENC-2079 fiber stone rack, NGC-1290 solid teflon basket, Marriott Courtyard Bullet Menu, side hand grips, stainless steel front, top & sides, cULus, CE, UL-EPH Classified, ANSI/NSF 4, TUV Voltage: 208/240/60/1, 30 amps, 6 food cord (nominal), NEMA 6-30P standard *Black Powder Coat Finish* (Navision ID: A37737) Eff 4/1/22



**Victory Refrigeration
RFS-1D-S1-HD-HC
Reach-In Dual Temp Cabinet**

**Qty Available: 1
\$11,311.39 ea**

UltraSpec™ Series Refrigerator/Freezer, Powered by V-Core™, Reach-in, one-section, self-contained refrigeration, 8.99 cu. ft. capacity per section, (2) half height solid hinged doors, (4) silver freeze (chrome-style) wire shelves, stainless steel exterior & interior, standard depth cabinet, TOUCH POINT™ electronic temperature control/indicators, LED lighting, expansion valve technology, Santoprene door gaskets with 2 year warranty, stainless steel breakers, top mounted compressors, refrigerator 1/6 HP & freezer 1/2 HP, cULus, UL EPH Classified, UL-Sanitation, MADE IN USA



**Victory Refrigeration
RFS-2D-S1-HC
Reach-In Dual Temp Cabinet**

**Qty Available: 1
\$13,196.44 ea**

UltraSpec™ Series Refrigerator/Freezer, Powered by V-Core™, Reach-in, two-section, self-contained refrigeration, 21.01 cu. ft. capacity per section, (2) full height solid hinged doors, (6) silver freeze (chrome-style) wire shelves, stainless steel exterior & interior, standard depth cabinet, TOUCH POINT™ electronic temperature control/indicators, LED lighting, expansion valve technology, Santoprene door gaskets with 2 year warranty, stainless steel breakers, top mounted compressors, refrigerator 1/3 HP & freezer 3/4 HP, cULus, UL EPH Classified, UL-Sanitation, MADE IN USA



**Victory Refrigeration
FS-1D-S1-HC
Reach-In Freezer**

**Qty Available: 1
\$7,968.76 ea**

UltraSpec™ Series Freezer, Powered by V-Core™, Reach-in, one-section, self-contained refrigeration, 21.01 cu. ft. capacity, (1) full height solid hinged door, (3) silver freeze (chrome-style) shelves, stainless exterior & interior, standard depth cabinet, TOUCH POINT™ electronic temperature control/indicator, LED lighting, expansion valve technology, Santoprene door gaskets with 2 year warranty, stainless steel breakers, R290 Hydrocarbon refrigerant, 3/4 HP, cULus, UL EPH Classified, UL-Sanitation, MADE IN USA



**Victory Refrigeration
FS-2D-S1-HC
Reach-In Freezer**

**Qty Available: 1
\$10,671.20 ea**

UltraSpec™ Series Freezer, Powered by V-Core™, Reach-in, two-section, self-contained refrigeration, 44.57 cu. ft. capacity, (2) full height solid hinged doors, (6) silver freeze (chrome-style) shelves, stainless exterior & interior, standard depth cabinet, TOUCH POINT™ electronic temperature control/indicator, LED lighting, expansion valve technology, Santoprene door gaskets with 2 year warranty, stainless steel breakers, R290 Hydrocarbon refrigerant, 3/4 HP, cULus, UL EPH Classified, UL-Sanitation, MADE IN USA



**Continental Refrigerator
1FN
Reach-In Freezer**

**Qty Available: 1
\$5,535.17 ea**

Freezer, reach-in, one-section, 20 cu. ft., self-contained refrigeration, stainless steel front, aluminum interior & ends, standard depth, full-height solid door, cylinder lock, LED interior lighting, electronic control with digital display, unit can be adjusted to operate as low as -10°F, hi-low alarm, electric condensate evaporator, R290 Hydrocarbon refrigerant, 1/2 HP, cETLus, NSF, ENERGY STAR®



**Continental Refrigerator
2FN
Reach-In Freezer**

**Qty Available: 1
\$7,520.48 ea**

Freezer, reach-in, two-section, self-contained refrigeration, stainless steel front, aluminum interior & ends, standard depth, full-height solid doors, cylinder locks, electronic control with digital display, unit can be adjusted to operate as low as -10°F, hi-low alarm, electric condensate evaporator, R290 Hydrocarbon refrigerant, 1/2 HP, cETLus, NSF, ENERGY STAR®



**Victory Refrigeration
RS-1D-S1-HC
Reach-In Refrigerator**

**Qty Available: 1
\$4,170.56 ea**

UltraSpec™ Series Refrigerator, Powered by V-Core™, Reach-in, one-section, self-contained refrigeration, 21.01 cu. ft. capacity, (1) full height solid hinged door, (3) silver freeze (chrome-style) shelves, stainless steel exterior & interior, standard depth cabinet, TOUCH POINT™ electronic temperature control/indicator, LED lighting, expansion valve technology, Santoprene door gaskets with 2 year warranty, stainless steel breakers, R290 Hydrocarbon refrigerant, 1/3 HP, cULus, UL EPH Classified, UL-Sanitation, MADE IN USA



**Victory Refrigeration
RS-2D-S1-HC
Reach-In Refrigerator**

**Qty Available: 1
\$9,175.24 ea**

UltraSpec™ Series Refrigerator, Powered by V-Core™, Reach-in, two-section, self-contained refrigeration, 44.57 cu. ft. capacity, (2) full height solid hinged doors, (6) silver freeze (chrome-style) shelves, stainless steel exterior & interior, standard depth cabinet, TOUCH POINT™ electronic temperature control/indicator, LED lighting, expansion valve technology, Santoprene door gaskets with 2 year warranty, stainless steel breakers, R290 Hydrocarbon refrigerant, 1/3 HP, cULus, UL EPH Classified, UL-Sanitation, MADE IN USA



**Continental Refrigerator
1RN
Reach-In Refrigerator**

**Qty Available: 1
\$4,448.88 ea**

Refrigerator, reach-in, one-section, 20 cu. ft., self-contained refrigeration, stainless steel front, aluminum interior & ends, standard depth, full-height solid door, cylinder lock, electronic control with digital display, hi-low alarm, electric condensate evaporator, R290 Hydrocarbon refrigerant, 1/4 HP, cETLus, NSF, ENERGY STAR®



**Continental Refrigerator
2RN
Reach-In Refrigerator**

**Qty Available: 1
\$5,885.37 ea**

Refrigerator, reach-in, two-section, self-contained refrigeration, stainless steel front, aluminum interior & ends, standard depth, full-height solid doors, cylinder locks, electronic control with digital display, hi-low alarm, electric condensate evaporator, R290 hydrocarbon refrigerant, 1/3 HP, cETLus, NSF, ENERGY STAR®



**True Mfg. - General Foodservice
GDM-26-HC~TSL01
Refrigerated Merchandiser**

**Qty Available: 1
\$3,453.86 ea**

Refrigerated Merchandiser, one-section, True standard look version 01, (5) shelves, (1) Low-E thermal glass hinged door, LED interior lights, powder coated steel exterior, white interior with stainless steel floor, R290 Hydrocarbon refrigerant, 1/3 HP, 115v/60/1-ph, 5.4 amps, NEMA 5-15P, cULus, UL EPH Classified, Made in USA, ENERGY STAR®



**True Mfg. - General Foodservice
GDM-45-HC-LD
Refrigerated Merchandiser**

**Qty Available: 1
\$5,096.85 ea**

Refrigerated Merchandiser, two-section, (8) shelves, (2) Low-E thermal glass sliding doors, LED interior lights, powder coated steel exterior, white interior with stainless steel floor, R290 Hydrocarbon refrigerant, 1/2 HP, 115v/60/1-ph, 8.5 amps, NEMA 5-15P, cULus, UL EPH Classified, Made in USA



**APW Wyatt (Middleby)
RTR-8
Refrigerated Rail**

**Qty Available: 1
\$4,595.97 ea**

Refrigerated Countertop Topping Rail, (8) 1/6 size pans, self-contained refrigeration, hinged removable covers, stainless steel construction, 1/2" non-adjustable legs, 1/5 HP, cULus



**Structural Concepts
HMG2653R
Refrigerated Service Case**

Qty Available: 1
\$10,440.74 ea

Harmony® Service Refrigerated Case, 26-3/4"W, Breeze™ with EnergyWise self-contained refrigeration system with evaporator pan, curved lift-up front glass, (3) lighted glass shelves, top light, swinging glass rear door, black interior, black trim, (2) full end panels with mirror, cETLus, ETL-Sanitation



**Absocold
ARD244AB10R/L
Refrigerator**

Qty Available: 1
\$214.44 ea

Guestroom refrigerator with auto defrost Dimensions: 25" H x 18-1/2" W x 20" D Cubic Capacity: 2.3 cu ft Exterior Finish: Black Voltage: 115/60/1



**Absocold
ARD369AB14R/L
Refrigerator**

Qty Available: 1
\$214.39 ea

guestroom refrigerator 3.6 cu. ft. Dimensions: 33 5/8"h x 18/1/2"w, 19 1/2"d Auto Defrost - color: black



**Danby
DAR017A2BDD
Refrigerator**

Qty Available: 1
\$162.00 ea

Compact 1.7 cu. ft. all refrigerator Color: Black Energy Star compliant Auto Defrost Dimensions: 17-11/16" W x 20-1/16"H x 20-1/16"D



**Absocold
CC369AB
Refrigerator Microwave Combo**

Qty Available: 1
\$403.08 ea

Cook N Cool Micro-Refrigerator 3.6 cu ft auto defrost refrigerator with ice storage compartment .9 cu ft microwave oven / 900 watts Assembled Exterior Finish: Black Dimension: 44-3/4"H x 18-1/2" W x 19-1/2" D Voltage: 120/60/1



**Cres Cor
2071818D
Refrigerator/Freezer Rack, Roll-In**

Qty Available: 1
\$1,354.32 ea

Rack, Roll-In Refrigerator, open frame design, angle-type uprights, with angle slides for 18" x 26" pans, slides on 3" centers, 18 pan capacity, welded extruded aluminum frame with perimeter bumper & enclosed base, NSF



**Victory Refrigeration
FIS-2D-S1-HC
Roll-In Freezer**

Qty Available: 1
\$13,976.02 ea

UltraSpec™ Series Freezer, Powered by V-Core™, Roll-in, two-section, self-contained refrigeration, 70.84 cu. ft. capacity, stainless exterior & interior, standard depth cabinet, (2) full height 20 gauge stainless steel doors, TOUCH POINT™ electronic temperature control/indicator, LED lighting, expansion valve technology, Santoprene door gaskets with 2 year warranty, stainless steel breakers, stainless steel ramp, (2) 3/4 HP, cULus, UL EPH Classified, UL-Sanitation, MADE IN USA



**Victory Refrigeration
FIS-1D-S1-HC
Roll-In Freezer**

Qty Available: 1
\$9,570.25 ea

UltraSpec™ Series Freezer, Powered by V-Core™, Roll-in, one-section, self-contained refrigeration, 34.86 cu. ft. capacity, stainless exterior & interior, standard depth cabinet, (1) full height 20 gauge stainless steel door, TOUCH POINT™ electronic temperature control/indicator, LED lighting, expansion valve technology, Santoprene door gaskets with 2 year warranty, stainless steel breakers, stainless steel ramp, 3/4 HP, cULus, UL EPH Classified, UL-Sanitation, MADE IN USA



Victory Refrigeration
RIS-1D-S1-HC
Roll-in Refrigerator

Qty Available: 1
\$7,456.94 ea

UltraSpec™ Series Refrigerator, Powered by V-Core™, Roll-in, one-section, self-contained refrigeration, 34.86 cu. ft. capacity, stainless exterior & interior, standard depth cabinet, (1) full height 20 gauge stainless steel door, TOUCH POINT™ electronic temperature control/indicator, LED lighting, expansion valve technology, Santoprene door gaskets with 2 year warranty, stainless steel breakers, stainless steel ramp, 1/3 HP, cULus, UL-Sanitation, UL EPH Classified, MADE IN USA



Victory Refrigeration
RIS-2D-S1-HC
Roll-in Refrigerator

Qty Available: 1
\$10,840.20 ea

UltraSpec™ Series Refrigerator, Powered by V-Core™, Roll-in, two-section, self-contained refrigeration, 70.84 cu. ft. capacity, stainless exterior & interior, standard depth cabinet, (2) full height 20 gauge stainless steel doors, TOUCH POINT™ electronic temperature control/indicator, LED lighting, expansion valve technology, Santoprene door gaskets with 2 year warranty, stainless steel breakers, stainless steel ramp, 3/4 HP, cULus, UL-Sanitation, UL EPH Classified, MADE IN USA



Evo America, LLC (Middleby)
10-0020-NG
Round Griddle/Plancha

Qty Available: 1
\$4,914.00 ea

Evo® Professional Commercial Series Cooking Station, natural gas, countertop, outdoor use, 30" diameter black seasoned steel removable cooking surface (plancha), 2 round inner & outer temperature zones, temperature range: 220°-550° F (121°-288° C), separate control knobs for inner & outer burners, electric push button ignition, heat shield, quick release removable stainless steel drip pan & burners, stackable, includes: cleaning kit, (2) stainless steel spatulas, (1) stainless steel scraper, 48,000 BTU, NSF, CE, Made in USA (fully assembled)



Evo America, LLC (Middleby)
10-0081-LP
Round Griddle/Plancha

Qty Available: 1
\$5,922.00 ea

(QUICK SHIP) Evo® Professional Commercial Series Cooking Station, propane, outdoor use, 30" diameter black seasoned steel removable cooking surface (plancha), (2) round inner & outer temperature zones, temperature range: 225°-550° F (121°-288° C), separate control knobs for inner & outer burners, electronic push button ignition, on wheeled cart with rear handle, stainless steel tank sleeve, quick release stainless steel drip pan, side mounted spill collection tray, includes: cleaning kit, (2) stainless steel spatulas, (1) stainless steel scraper, 48,000 BTU, NSF, CE, Made in USA (Ships within 1-2 days)



SafeMark Systems
E5.1
Safe

Qty Available: 1
\$126.00 ea

Executive 17 inch laptop safe Enhanced LED Display 5 Year warranty (including 24/7 free phone support) \$10,000 limited warranty against forced entry (5 years) Color: Black or Beige (Must Specify) Size: 8" H x 19.5"W x 15.5"D



Innovative Hospitality Concepts
INNS
Safe

Qty Available: 1
\$118.30 ea

Digital laptop safe - accommodates 15" laptop Dimension: 7-7/8"H x 17-1/8"W x 14-3/8"D Standard Colors: ivory, black or grey. Custom colors available at no additional cost (SPECIFY COLOR REQUIRED) ADA compliant lighted keypad & digital display panel Internal LED lighting standard Comprehensive audit trail Beep tone confirmation



Innovative Hospitality Concepts
INNSO
Safe

Qty Available: 1
\$107.58 ea

Digital laptop safe - accommodates 15" laptop Dimension: 7-7/8"H x 17-1/8"W x 14-3/8"D Standard Colors: ivory, black or grey. Custom colors available at no additional cost (SPECIFY COLOR REQUIRED) ADA compliant lighted round design keypad (matte or chrome trim) & digital display panel Internal LED lighting standard Comprehensive audit trail Beep tone confirmation



Dormont Manufacturing
1675KIT48 Packed: 1 kt
Safety System Moveable Gas Connector

Qty Available: 1
\$210.07 kt

Dormont Blue Hose™ Moveable Gas Connector Kit, 3/4" inside dia., 48" long, covered with stainless steel braid, coated with blue antimicrobial PVC, (1) SnapFast® QD, (1) full port valve, (2) 90° elbows, coiled restraining cable with hardware, 180,000 BTU/hr minimum flow capacity, limited lifetime warranty



Hobart
SDPE-11
Salad / Vegetable Dryer,
Electric

Qty Available: 1
\$4,301.64 ea

Salad Dryer, floor model, 20-gallon capacity (approximately 16 heads of lettuce), 406 RPM, polyethylene outer tub & lid, polyethylene spin basket with handle grips, fully sealed polyethylene base, 5-minute timer, permanently lubricated gear drive, drain pipe extension tube, stainless steel motor splashguard, casters with brakes, 1/4 HP motor with thermal overload, 115v/60/1-ph, 2.5 amps, UL, NSF



Delfield
SALD-1
Salad / Vegetable Dryer,
Electric

Qty Available: 1
\$4,180.95 ea

Shelleymatic® Salad Dryer, capacity (20) gallons, stainless steel exterior & lid, polyurethane interior, unit completely enclosed, watertight motor, 1-1/2" drain, adjustable on/off timer with cycles up to 5 minutes, cord & plug included, 4" locking stem casters, 1/6 HP, 115v/60/1-ph, 2.7 amp, NEMA 5-15P, cUL, UL, NSF



Vulcan
36IRB-N
Salamander Broiler, Gas

Qty Available: 1
\$5,163.87 ea

Salamander Broiler, natural gas, 36" wide, 30,000 BTU heavy duty infrared burner, dual control, (6) grid positions, removable pan, stainless steel front, top & sides, 3/4" gas connection & pressure regulator



Vulcan
36RB-N
Salamander Broiler, Gas

Qty Available: 1
\$4,593.59 ea

Salamander Broiler, natural gas, 36" wide, 50,000 BTU heavy duty burner, dual control, (6) grid positions, removable pan, stainless steel front, top & sides, 3/4" gas connection & pressure regulator



Star (Middleby)
PGT14IE
Sandwich / Panini Grill

Qty Available: 1
\$4,801.17 ea

Pro-Max 2.0® Sandwich Grill, 14.5" W x 14.2"D grooved cast iron cooking surface, performance torsion spring hinge with ergonomic curved handle, electronic 175-550°F thermostat controls with timer, low profile, removable grease drawer, stainless steel exterior, 2.5" adjustable metal legs, cULus, UL EPH Classified, Made in USA (old model reference: CG14IE and CG14IEA)



Star (Middleby)
GX10IG
Sandwich / Panini Grill

Qty Available: 1
\$1,155.28 ea

(QUICK SHIP) Grill Express™ Two-Sided Grill, electric, 10"W x 10"D cooking surface, fixed lower grill, hinged upper grill, grooved iron grill plates, thermostatic control, accommodates product up to 3" thick, 0.75" splash guard on bottom platen, stainless steel front & sides, cULus, UL EPH Classified (Ships within 4 days)



Star (Middleby)
GX14IG
Sandwich / Panini Grill

Qty Available: 1
\$1,224.53 ea

(QUICK SHIP) (MIDDLEBY ESSENTIALS ITEM) Grill Express™ Two-Sided Grill, electric, 14"W x 10"D cooking surface, fixed lower grill, hinged upper grill, grooved iron grill plates, thermostatic control, accommodates product up to 3" thick, 0.75" splash guard on bottom platen, stainless steel front & sides, cULus, UL EPH Classified (Ships within 4 days)



Star (Middleby)
GX20IG
Sandwich / Panini Grill

Qty Available: 1
\$2,646.57 ea

(QUICK SHIP) Grill Express™ Two-Sided Grill, electric, 20"W x 10"D cooking surface, fixed lower grill, (2) hinged upper grills, grooved iron grill plates, thermostatic control, accommodates product up to 3" thick, 0.75" splash guard on bottom platen, stainless steel front & sides, cULus, UL EPH Classified (Ships within 4 days)



**Waring
WFG250
Sandwich / Panini Grill**

Qty Available: 1
\$739.64 ea

Tostato Supremo™ Large Toasting Grill, electric, single, 14-1/2" x 11" cooking surface, hinged auto-balancing top plate with heat resistant handles, flat cast iron plates, adjustable thermostats 570°F (300°C), indicator lights, brushed stainless steel body & removable drip tray, 1.8kW, 120v/60/1-ph, 15.0 amp, NEMA 5-15P, UL, NSF



**True Mfg. - General Foodservice
TSSU-48-10-HC
Sandwich / Salad Preparation Refrigerator**

Qty Available: 1
\$5,022.51 ea

Sandwich/Salad Unit, (10) 1/6 size (4"D) poly pans, stainless steel insulated cover, 11-3/4"D cutting board, (2) full doors, (4) PVC coated adjustable wire shelves, stainless steel top, front, sides, GalFan coated steel back, aluminum interior with stainless steel floor, R290 Hydrocarbon refrigerant, 1/3 HP, 115v/60/1-ph, 5.8 amps, NEMA 5-15P, cULus, UL EPH Classified Made in USA



**True Mfg. - General Foodservice
TSSU-27-08-HC
Sandwich / Salad Preparation Refrigerator**

Qty Available: 1
\$2,980.29 ea

Sandwich/Salad Unit, (8) 1/6 size (4"D) poly pans, stainless steel insulated cover, 11-3/4"D cutting board, (1) door, (2) PVC coated adjustable wire shelves, stainless steel top, front & sides, aluminum back, aluminum interior with stainless steel floor, R290 Hydrocarbon refrigerant, 1/5 HP, 115v/60/1-ph, 3.5 amps, NEMA 5-15P, cULus, UL EPH Classified, Made in USA



**True Mfg. - General Foodservice
TSSU-60-16-HC
Sandwich / Salad Preparation Refrigerator**

Qty Available: 1
\$4,886.53 ea

Sandwich/Salad Unit, (16) 1/6 size (4"D) poly pans, stainless steel insulated cover, 11-3/4"D cutting board, (2) full doors, (4) PVC coated adjustable wire shelves, stainless steel top/front/sides, GalFan coated steel back, aluminum interior with stainless steel floor, R290 Hydrocarbon refrigerant, 1/3 HP, 115v/60/1-ph, 6.5 amps, NEMA 5-15P, cULus, UL EPH Classified, Made in USA



**True Mfg. - General Foodservice
TSSU-72-18-HC
Sandwich / Salad Preparation Refrigerator**

Qty Available: 1
\$5,756.43 ea

Sandwich/Salad Unit, (18) 1/6 size (4"D) poly pans, stainless steel insulated cover, 11-3/4"D cutting board, (3) full doors, (6) PVC coated adjustable wire shelves, stainless steel top/front/sides, GalFan coated steel back, aluminum interior with stainless steel floor, R290 Hydrocarbon refrigerant, 1/2 HP, 115v/60/1-ph, 7.2 amps, NEMA 5-15P, cULus, UL EPH Classified, Made in USA



**Beverage Air
SPE27HC-B
Sandwich / Salad Preparation Refrigerator**

Qty Available: 1
\$2,243.94 ea

Sandwich Top Refrigerated Counter, one-section, 27"W, 6.9 cu. ft., (1) door, stainless steel top with opening for (8) 1/6 size pans, 10" cutting board, (2) epoxy-coated wire shelves, stainless steel exterior, aluminum interior, rear-mounted self-contained refrigeration, (pans furnished are 4" deep, tops will accommodate 6" deep pans), R290 Hydrocarbon refrigerant, 1/10 HP, cULus, UL EPH Classified, UL-Sanitation, Made in USA



**Metro
SEC55C
Security Unit**

Qty Available: 1
\$845.59 ea

Super Erecta® Security Unit, stationary, chrome plated finish, 50-1/2"W x 27-1/4"D x 66-13/16"H, no intermediate shelves, NSF



**Structural Concepts
CO37R-E3
Self-Service Refrigerated Open Air Screen Case**

Qty Available: 1
\$9,089.82 ea

Express 3 Oasis® Self-Service Refrigerated Open Air Screen Case, 36-1/4"W, 79-3/4"H, Breeze-E (Type II) with EnergyWise self-contained refrigeration system, (4) lighted removable & adjustable metal shelves, top light, black interior & exterior, (2) full end panels, flat front, casters, cETLus, ETL-Sanitation



Metro
5Q557G3
Shelving Unit, Hybrid Poly/Wire
with Polymer Post

Qty Available: 1
 \$664.02 ea

MetroMax® Q Starter Shelving Unit, 48"W x 24"D x 74"H, 800 lb. capacity per shelf, 2000 lb. capacity per unit, (5) quick-adjust shelves with removable polymer open-grid shelf mats and epoxy coated one-piece steel frames, (4) polymer posts, Microban antimicrobial product protection, KD, NSF



Taylor Company (Middleby)
C152
Soft Serve Machine

Qty Available: 1
 \$8,309.00 ea

Soft Serve Freezer, counter model, self-contained, air-cooled, single flavor, 8 qt. hopper, 1.5 qt. freezing cylinder, indicator lights, Softech™ electronic controls, standby mode, door interlock system, stainless steel finish, R404A, 1/2 HP motor, NSF, cULus listed (Go to the Taylor web site link to locate your distributor for pricing & warranty information)



Taylor Company (Middleby)
C161
Soft Serve Machine

Qty Available: 1
 \$15,384.60 ea

Soft Serve Freezer, counter model, self-contained, compact twin twist, (2) 8 qt. hoppers, (2) 1.5 qt. freezing cylinders, indicator lights, Softech™ electronic controls, standby mode, air filter, door interlock system, stainless steel finish, R404A, (2) 1/2 HP motors, NSF, cULus listed (Go to the Taylor web site link to locate your distributor for pricing & warranty information)



Taylor Company (Middleby)
702
Soft Serve Machine

Qty Available: 1
 \$10,330.60 ea

Soft Serve Freezer, counter model, self-contained, single flavor, 20 qt. hopper, 4 qt. freezing cylinder, indicator lights, solid state controls, standby, stainless steel finish, R404A, 1 HP motor, NSF, cULus listed (Go to the Taylor web site link to locate your distributor for pricing & warranty information)



Taylor Company (Middleby)
772
Soft Serve Machine

Qty Available: 1
 \$21,974.40 ea

Soft Serve Freezer, floor model, self-contained, two flavor, (2) 20 qt. hoppers, (2) 7 qt. freezing cylinders, indicator lights, solid state controls, standby, stainless steel finish, R404A, (2) 2 HP motors, NSF, cULus listed (Go to the Taylor web site link to locate your distributor for pricing & warranty information)



Taylor Company (Middleby)
C706
Soft Serve Machine

Qty Available: 1
 \$14,968.80 ea

Crown® Series Soft Serve Freezer, counter model, self-contained, single flavor pump, 20 qt. hopper, 3.4 qt. freezing cylinder, indicator lights, Softech™ electronic controls, standby, digital temperature indicator, stainless steel finish, R404A, 1-1/2 HP motor, NSF, cULus listed (Go to the Taylor web site link to locate your distributor for pricing & warranty information)



Taylor Company (Middleby)
C707
Soft Serve Machine

Qty Available: 1
 \$12,321.54 ea

Crown® Series Soft Serve Freezer, counter model, self-contained, single flavor, 20 qt. hopper, 3.4 qt. freezing cylinder, indicator lights, Softech™ electronic controls, standby, digital temperature indicator, stainless steel finish, R404A, 1-1/2 HP motor, NSF, cULus listed (Go to the Taylor web site link to locate your distributor for pricing & warranty information)



Taylor Company (Middleby)
C713
Soft Serve Machine

Qty Available: 1
 \$22,099.00 ea

Crown® Series Soft Serve Freezer, floor model, self-contained, twist, (2) 20 qt. hoppers, (2) 3.4 qt. freezing cylinders, indicator lights, touch screen controls, standby, stainless steel finish, R449A, (2) 1-1/2 HP motor, NSF, cULus listed (Go to the Taylor web site link to locate your distributor for pricing & warranty information)



**Vulcan
C24E05
Steamer, Convection,
Boilerless, Countertop**

**Qty Available: 1
\$13,400.58 ea**

Convection Steamer, Boilerless/Connectionless Countertop, electric, (5) 12" x 20" pan capacity, professional controls with 60 minute timer, buzzer, & constant steam feature, generator pan with stamped water level line, heavy duty door latch, stainless steel interior & exterior, UL, ENERGY STAR®



**Crown (Middleby)
EC-2
Steamer, Pressure, Electric**

**Qty Available: 1
\$36,928.59 ea**

Pressure Steamer, electric heated boiler, (2) compartments, 36" cabinet base, independent automatic timer controls, automatic boiler blow down, removable shelf supports, slide out shelf, CSD-1 package, includes water filter system & "Y" strainer, cabinet base with (2) solid hinged doors, 304 stainless steel interior & exterior finish, cCSAus, NSF



**Crown (Middleby)
EC-3
Steamer, Pressure, Electric**

**Qty Available: 1
\$38,275.50 ea**

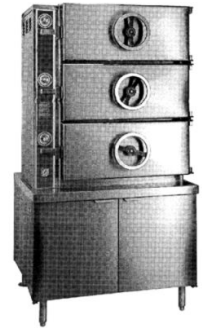
Pressure Steamer, electric heated boiler, (3) compartments, 36" cabinet base, independent automatic timer controls, automatic boiler blow down, removable shelf supports, slide out shelf, CSD-1 package, includes water filter system & "Y" strainer, cabinet base with (2) solid hinged doors, 304 stainless steel interior & exterior finish, cCSAus, NSF



**Crown (Middleby)
GC-2
Steamer, Pressure, Gas**

**Qty Available: 1
\$40,213.50 ea**

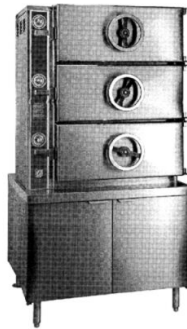
Pressure Steamer, gas heated boiler, (2) compartments, 36" cabinet base, independent automatic timer controls, electronic ignition, removable shelf supports, slide out shelf, CSD-1 package, includes water filter system, automatic boiler blowdown, split water line, water in "Y" strainer (condenser feed), stainless steel interior & exterior finish, 250,000 BTU, 73.3kW/hr, CSA-Star, CSA-Flame, NSF



**Crown (Middleby)
GC-3
Steamer, Pressure, Gas**

**Qty Available: 1
\$47,965.50 ea**

Pressure Steamer, gas heated boiler, (3) compartments, 36" cabinet base, independent automatic timer controls, electronic ignition, removable shelf supports, slide out shelf, CSD-1 package, includes water filter system, automatic boiler blowdown, split water line, water in "Y" strainer (condenser feed), stainless steel interior & exterior finish, 250,000 BTU, 87.9kW/hr, CSA-Star, CSA-Flame, NSF



**Elkay Foodservice Products
SL3C20X28-2-24
Three (3) Compartment Sink**

**Qty Available: 1
\$3,240.63 ea**

Spec-Line Series Sink, 3-compartment, 24" left & right drainboards, 20"W x 28" front-to-back x 14" deep bowls, 10"H backsplash, 14 gauge stainless steel top, bowl, legs & adjustable feet, includes (3) 3-1/2" basket strainers, overall dimensions 112"L x 33-13/16"W x 44-3/4" H



**Vulcan
VE40
Tilting Skillet Braising Pan,
Electric**

**Qty Available: 1
\$26,485.80 ea**

Braising Pan, electric, 40-gallon capacity, 16 kW FastBatch™ embedded heating technology, 46" wide open base, manual tilt, 9" deep stainless steel pan with gallon markings, pouring lip & removable strainer, spring assist cover with drip edge, pan holder, water tight solid state controls, includes L faucet bracket, 12" stainless steel legs with adjustable flanged feet, cULus, UL EPH Classified



**Vulcan
VG40
Tilting Skillet Braising Pan, Gas**

**Qty Available: 1
\$31,441.50 ea**

Braising Pan, Gas, 40-gallon capacity, 46" wide open base, manual tilt, 9" deep stainless steel pan with gallon markings, pouring lip & removable strainer, spring assist cover with drip edge, pan holder, solid state control, includes L faucet bracket, electric ignition, 12" stainless steel legs with adjustable flanged feet, 120,000 BTU, CSA Flame, CSA Star, UL EPH Classified



**Waring
WCT800RC
Toaster, Pop-Up**

**Qty Available: 1
\$493.09 ea**

Commercial Toaster, heavy-duty, (4) 1-1/8" slots, (4) slice capacity (up to 300 slices/hr), (2) rotary dial to adjust browning controls, removable crumb tray, carriage control levers, replaceable industrial heating plates, brushed stainless steel finish, NEMA 5-15P, 120v/50/60/1-ph, 15 amps, 1800 watts, cETLus, NSF



**Elkay Foodservice Products
SL2C20X28-2-24
Two (2) Compartment Sink**

**Qty Available: 1
\$2,404.93 ea**

Spec-Line Series Sink, 2-compartment, 24" left & right drainboards, 20"W x 28" front-to-back x 14" deep bowls, 10"H backsplash, 14 gauge stainless steel top, bowl, legs & adjustable feet, includes (2) 3-1/2" basket strainers, overall dimensions 90"L x 33-13/16"W x 44-3/4" H



**True Mfg. - General Foodservice
TUC-27D-2-HC
Undercounter Refrigerator**

**Qty Available: 1
\$4,383.59 ea**

Undercounter Refrigerator, 33 - 38°F, (2) drawers each, accommodates (1) 12" x 20" x 6" food pan (NOT included), stainless steel top, front & sides, clear coated aluminum interior with stainless steel floor, R290 Hydrocarbon refrigerant, 1/6 HP, 115v/60/1-ph, 2.0 amps, NEMA 5-15P, cULus, UL EPH Classified, CE, Made in USA



**True Mfg. - General Foodservice
TUC-44-HC
Undercounter Refrigerator**

**Qty Available: 1
\$4,209.90 ea**

Deep Undercounter Refrigerator, 33 - 38°F, side mounted self-contained refrigeration, (1) stainless steel door, (2)PVC coated adjustable wire shelves, stainless steel top & sides, aluminum interior with stainless steel floor, R290 Hydrocarbon refrigerant, 1/10 HP, 115v/60/1-ph, 1.7 amps, NEMA 5-15P, cULus, UL EPH Classified, Made in USA



**True Mfg. - General Foodservice
TUC-60-HC
Undercounter Refrigerator**

**Qty Available: 1
\$4,319.77 ea**

Undercounter Refrigerator, 33 - 38°F, (2) stainless steel doors, (4) PVC coated adjustable wire shelves, stainless steel top & sides, aluminum interior with stainless steel floor, R290 Hydrocarbon refrigerant, 1/4 HP, 115v/60/1-ph, 4.0 amps, NEMA 5-15P, cULus, UL EPH Classified, Made in USA



**Beverage Air
UCR27AHC
Undercounter Refrigerator**

**Qty Available: 1
\$1,850.90 ea**

Undercounter Refrigerator, one-section, 27"W, 6.13 cu. ft., (1) door, (2) shelves, stainless steel exterior front, sides, door, top & grille, aluminum interior, rear-mounted self-contained refrigeration, R290 Hydrocarbon refrigerant, 1/10 HP, cULus, UL EPH Classified, UL-Sanitation, Made in USA



**Beverage Air
UCR48AHC
Undercounter Refrigerator**

**Qty Available: 1
\$3,066.97 ea**

Undercounter Refrigerator, two-section, 48"W, 11.82 cu. ft., (2) doors, (4) shelves, stainless steel exterior front, sides, door, top & grille, aluminum interior, rear-mounted self-contained refrigeration, R290 Hydrocarbon refrigerant, 1/6 HP, cULus, UL EPH Classified, UL-Sanitation, Made in USA



**Hobart
VS9-12
Vegetable Cutter Attachment**

**Qty Available: 1
\$2,195.76 ea**

9" Vegetable Slicer for #12 attachment hub; includes back case, hopper front, & adjustable slicer plate, NSF



Wells (Middleby)
RW-1HD
Warming Drawer, Free Standing

Qty Available: 1
\$2,570.64 ea

Heavy Duty Warming Drawer Unit, freestanding, one drawer, capacity approximately 8 dozen rolls/drawer, humidity and thermostat controls, stainless steel construction, cULus



Wells (Middleby)
RW-2HD
Warming Drawer, Free Standing

Qty Available: 1
\$4,441.04 ea

Heavy Duty Warming Drawer Unit, freestanding, two drawers, capacity approximately 8 dozen rolls/drawer, humidity and thermostat controls, stainless steel construction, cULus, CE



Wells (Middleby)
RW-3HD
Warming Drawer, Free Standing

Qty Available: 1
\$6,250.39 ea

Heavy Duty Warming Drawer Unit, freestanding, three drawers, capacity approximately 8 dozen rolls/drawer, humidity and thermostat controls, stainless steel construction, cULus



True Mfg. - General Foodservice
GDM-23W-HC~TSL01
Wine Refrigerator

Qty Available: 1
\$4,435.81 ea

Wine Merchandiser, one-section, True standard look version 01, (4) wine racks & (1) shelf, powder coated steel exterior, (1) Low-E thermal glass hinged door with lock, LED interior lighting, black aluminum interior with mirrored back, stainless steel floor, R290 Hydrocarbon refrigerant, 1/3 HP, 115v/60/1-ph, 5.4 amps, NEMA 5-15P, cULus, Made in USA, ENERGY STAR®



Metro
EZ2448BR-4
Wire Shelving Unit

Qty Available: 1
\$273.77 ea

Super Erecta® Convenience Pak Shelving Unit, 48"W x 24"D x 74"H, (4) wire shelves with clips & (4) split posts with adjustable feet, Super Erecta Brite™ finish, KD, NSF



Metro
5A557K3
Wire Shelving Unit

Qty Available: 1
\$455.11 ea

Super Adjustable Super Erecta® Starter Shelving Unit, 48"W x 24"D x 74"H, (5) wire shelves, (4) posts, Metroseal 3™ epoxy-coated corrosion-resistant finish with Microban® antimicrobial protection, KD, NSF



Elkay Foodservice Products
SLWT30S60-BG
Work Table, Stainless Steel Top

Qty Available: 1
\$817.39 ea

Spec-Line Series Work Table, 60"W x 30"D, 14/300 series stainless steel top with 4"H backsplash, adjustable 18 gauge galvanized undershelf, with adjustable plastic feet, NSF



Elkay Foodservice Products
DSLWT30S120-BS
Work Table, Stainless Steel Top

Qty Available: 1
\$2,092.63 ea

Deluxe Spec-Line Series Work Table, 120"W x 30"D, 14/300 series stainless steel top with 4"H backsplash, adjustable 18/300 series stainless steel undershelf, (6) stainless steel legs with adjustable metal feet, NSF



Elkay Foodservice Products
SLWT30S48-STS
Work Table, Stainless Steel Top

Qty Available: 1
\$810.64 ea

Spec-Line Series Work Table,
48"W x 30"D, 14/300 series
stainless steel flat top,
adjustable 18 gauge stainless
steel undershelf, stainless steel
legs with adjustable metal feet,
NSF

